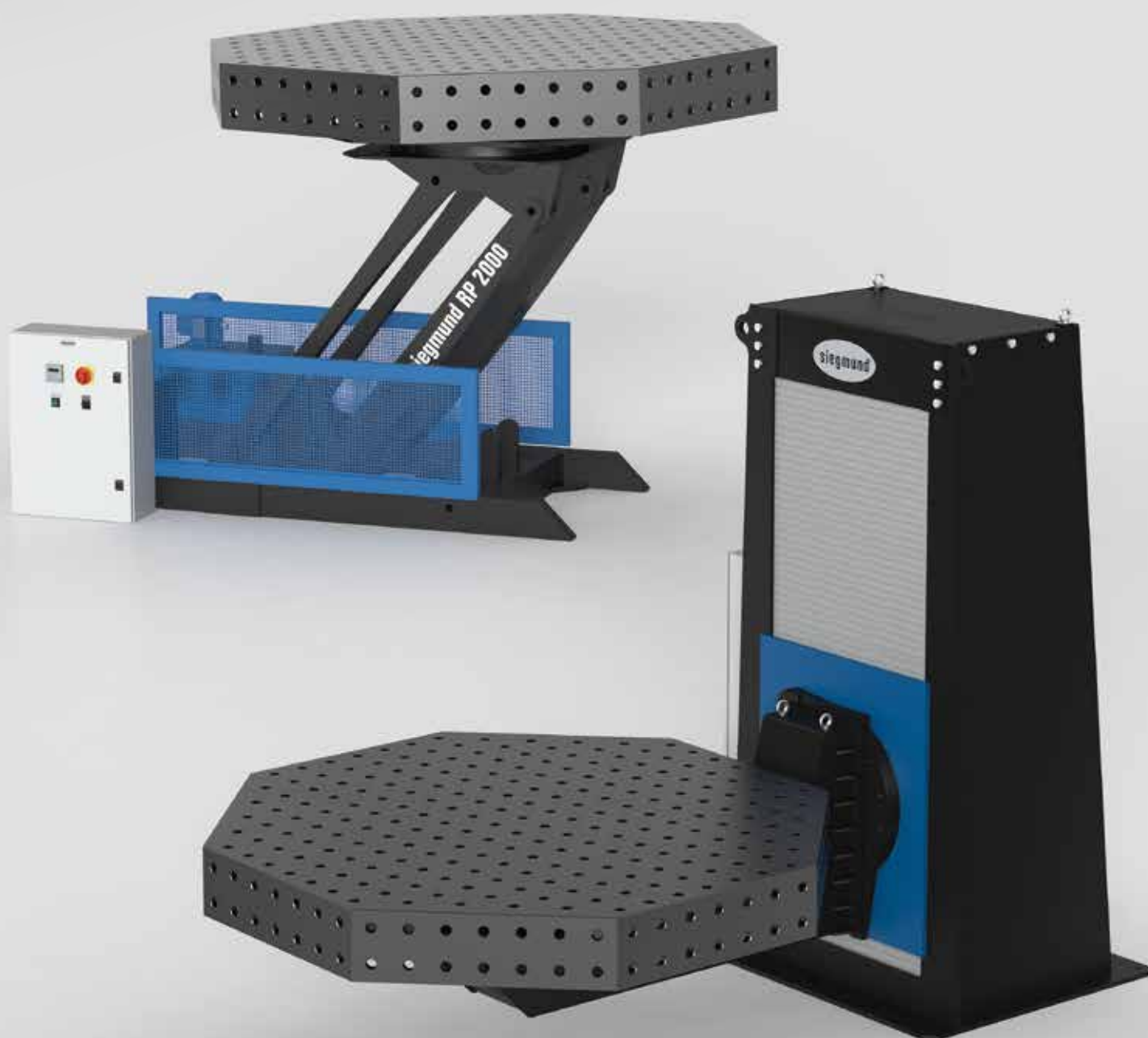


POSITIONER

ERGONOMIC, PRECISE AND SAFE POSITIONING AND WELDING WITH MANIPULATORS –
AN INVESTMENT THAT PAYS OFF.



siegmund®

SIEGMUND ROTO-POSITIONER

YOUR BENEFITS

The Siegmund Roto-Positioner is ideal for welding, assembly and maintenance work. Positioning is via a hydraulic rotary and tilt function, together with an infinitely variable height adjustable axis.

Available in three different sizes with load capacities of 1.250 kg, 2.000 kg and 3.000 kg. Custom sizes available on request.

PRODUCTIVITY

- Rapid orientation of workpiece
- Optimum ergonomic positioning offers maximum productivity
- One set-up for lifting, tilting and rotating
- Reduced down time

ERGONOMICS

- Maximum access to component delivers best product performance
- Reduced risk of repetitive strain injury

QUALITY

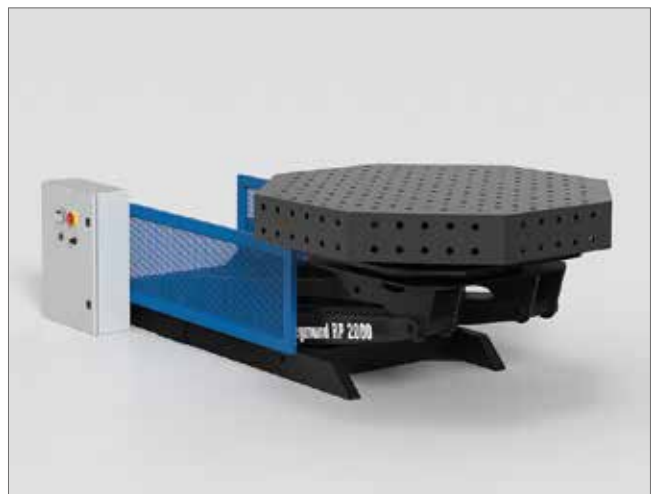
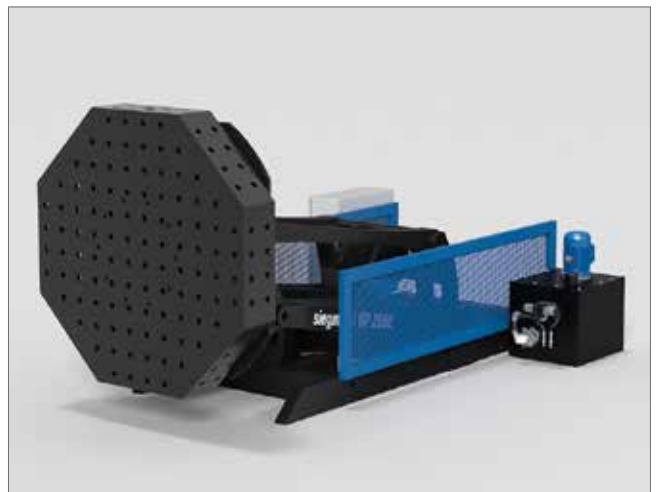
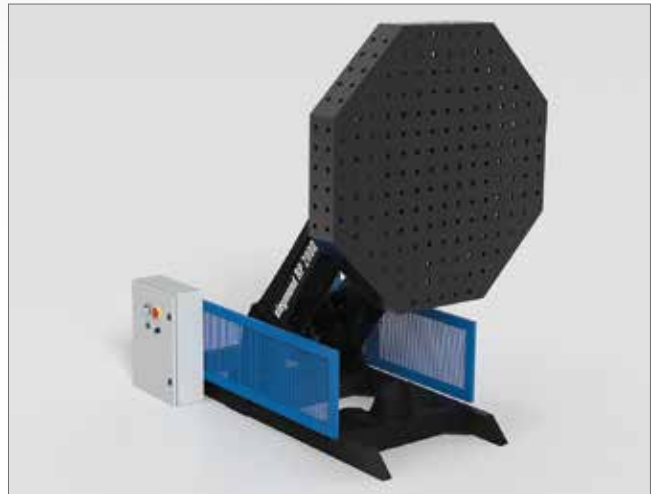
- Improved quality with flexible positioning (flat position)
- Improved quality from maximum access

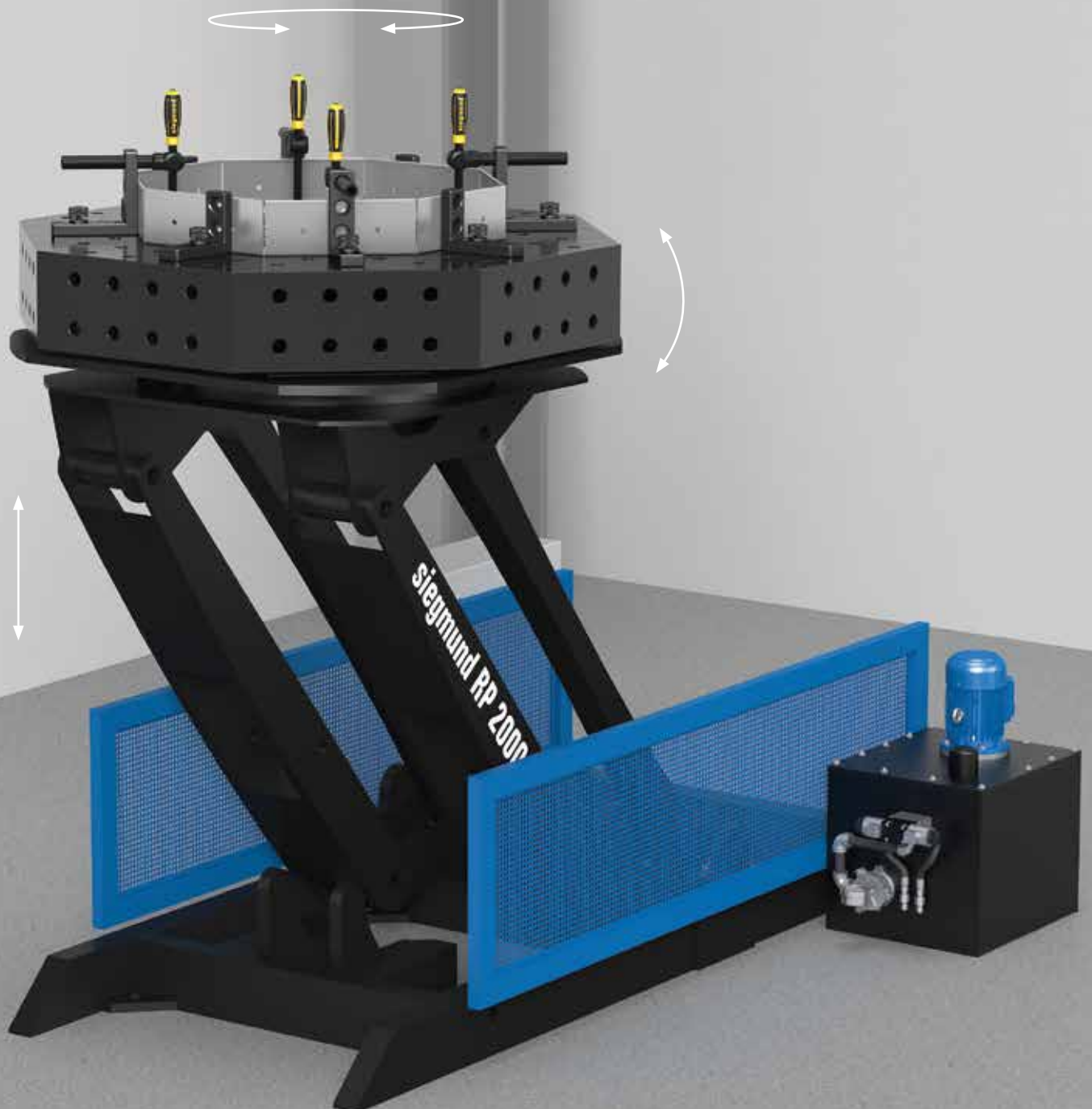
TECHNICAL FEATURES

- Incl. manual operation (wired), additional controls available for an extra charge
- Hydraulic rotation of the clamping plate
- Tilting range up to 95° (optional up to 140°)
- Hydraulic height adjustment and tilt function

FURTHER DETAILS

- Large working area, low height
- Optional rotatable ground connection
- Optional rotation of the clamping plate with electric drive (still hydraulic height adjustment and tilt function)





SIEGMUND ROTO-POSITIONER

AVAILABLE TYPES



RP 1250



RP 2000



RP 3000

Further sizes are available on request.

TECHNICAL SPECIFICATIONS

	RP 1250	RP 2000	RP 3000
Weight Positioner (without table plate)	approx. 685 kg	approx. 855 kg	approx. 1.305 kg
Max. load-bearing capacity ¹	1.250 kg	2.000 kg	3.000 kg
Table revolutions per minute (hydraulic)	2,0	1,7	1,5
Table revolutions per minute (electric)	0 – 2	0 – 2	0 – 2
Max. turning moment table	490 Nm	1.250 Nm	1.960 Nm
Tilt angle	95°	95° (optional 140°)	95° (optional 140°)
Tilting moment	4.900 Nm	7.850 Nm	11.750 Nm
Minimum height horizontal (without table)	700 mm	720 mm	720 mm
Maximum height vertical (without table)	1.120 mm	1.300 mm	1.620 mm
Item No.	6R120016	6R200016	6R300016

¹ Please note: Maximum load minus weight of table.

FURTHER OPTIONS



MANUAL OPERATION (WIRED)¹

The manual operation can be inserted into the holder and placed in a desired location. For easy handling, the manual operation can be removed at any time. The control buttons of the wired hand operation allow you to manually adjust the positions.

Item No. 6R000150



FOOT PEDAL CONTROL¹

The foot pedal control is an alternative to the manual operation. The rotation of the clamping plate can be started and stopped with the integrated start and stop function of the foot pedal.

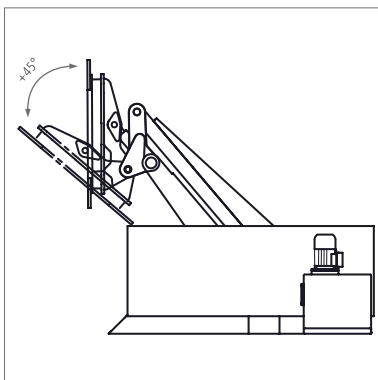
Item No. 6R000250



CONTROL PANEL WITH TEACH FUNCTION

The control panel with teach function enables the automation of your work processes. Positions can be programmed, stored and repeated anytime by pressing a button.

Item No. 6R000550



OPTIONAL TILT ANGLE 140°

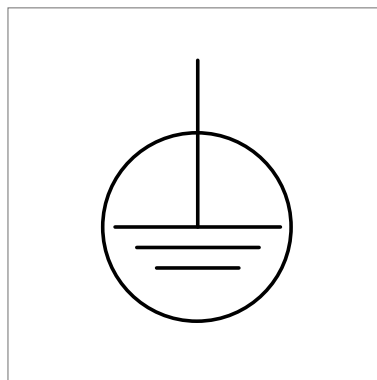
The clamping plate can be tilted on the positioner to 140° by using an additional cylinder. Not available for RP 1250.

RP 2000

Item No. 6R000350

RP 3000

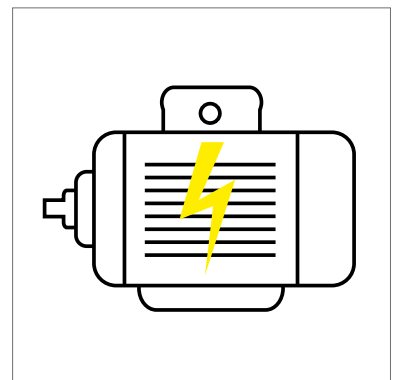
Item No. 6R000360



ROTATABLE GROUND CONNECTION

The stable ground connection directly on the machine guarantees an optimal connection to the table plate (especially while the table is rotating). The welding machine is connected to the appliance by a trunnion. Thus twisted battery ground cables can be prevented.

Item No. 6R000400



ELECTRIC DRIVE

Using an electric motor the driven rotation can be very accurately controlled and the corresponding speed can be adjusted continuously. Lifting and tilting is still made through the hydraulic drive.

RP 1250

Item No. 6R000450

RP 2000

Item No. 6R000460

RP 3000

Item No. 6R000470

SIEGMUND L-POSITIONER

YOUR BENEFITS

The Siegmund L-Positioner is ideal for welding, assembly and maintenance work. Positioning is via a electro-hydraulic rotary function, together with an infinitely variable height adjustable axis.

Available in three different sizes with load capacities of 1.200 kg, 2.500 kg and 5.000 kg. Custom sizes available on request.

PRODUCTIVITY

- Rapid orientation of workpiece
- Optimum ergonomic positioning offers maximum productivity
- One set-up for lifting and rotating
- Reduced down time

ERGONOMICS

- Maximum access to component delivers best product performance
- Reduced risk of repetitive strain injury

QUALITY

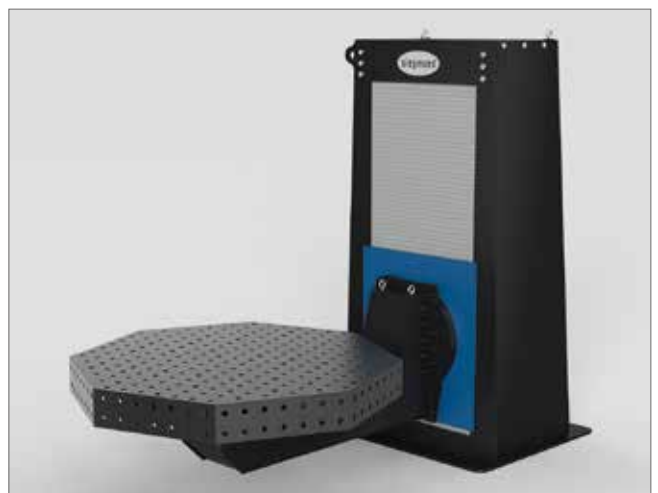
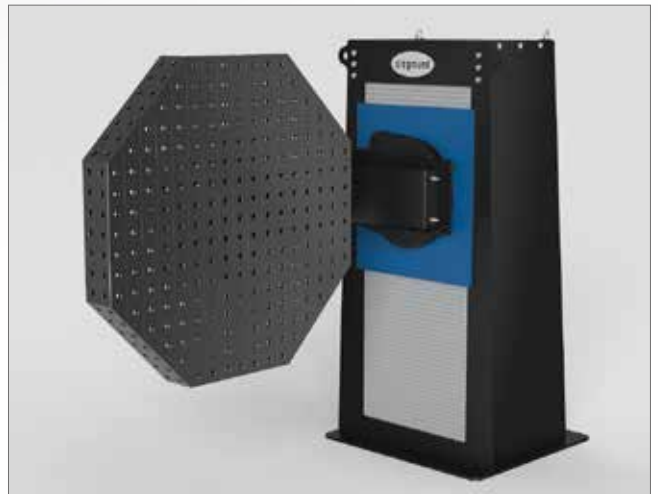
- Improved quality with flexible positioning (flat position)
- Improved quality from maximum access

TECHNICAL FEATURES

- Incl. control panel or manual operation (wired), additional controls available for an extra charge
- Incl. ground connection
- Rotation of the clamping plate via electric motor
- Pivoting range of the arm up to $\pm 180^\circ$
- Hydraulic height adjustment
- Also available with controlled axes for an extra charge

FURTHER DETAILS

- High repeat accuracy
- Ideal for integration into a robot cell (optional with controlled axes)
- Optional endless arm rotation





SIEGMUND L-POSITIONER

AVAILABLE TYPES



LP 1200



LP 2500



LP 5000

Further sizes are available on request.

TECHNICAL SPECIFICATIONS

	LP 1200	LP 2500	LP 5000
Weight Positioner (without table plate)	approx. 2.240 kg	approx. 4.300 kg	approx. 7.200 kg
Max. load-bearing capacity ¹	1.200 kg	2.500 kg	5.000 kg
Max. table top ø	1.200 mm	1.550 mm	1.800 mm
Table revolutions per minute (r.p.m)	0,013 – 1,370	0,015 – 1,490	0,014 – 1,370
Max. turning moment table	1.500 Nm	3.000 Nm	7.000 Nm
Arm revolutions per minute (r.p.m)	0,06 – 0,90	0,078 – 1,170	0,064 – 0,950
Max. turning moment arm	1.500 Nm	3.000 Nm	7.000 Nm
Minimum height	750 mm	850 mm	950 mm
Maximum height	1.750 mm	1.950 mm	2.150 mm
Item No.	6L120016	6L250016	6L500016

¹ Please note: Maximum load minus weight of table.

FURTHER OPTIONS



One of the two operations showed in the picture is included in the basis price.
Choose between control panel or manual operation (wired).



CONTROL PANEL¹

The control panel can be moved and placed at a desired location. With the control buttons you can adjust positions manually.

Item No. 6L000100

MANUAL OPERATION¹

Positions can be set manually via control keys.

WIRED

Item No. 6L000150

WIRELESS

Item No. 6L000200

FOOT PEDAL CONTROL¹

The table can be rotated by using the integrated start and stop function of the foot pedal. The foot pedal can be used only in combination with the control panel.

Item No. 6L000250



CONTROL VIA SWITCH BOX

In addition to the control panel or manual operation, there is another control option. With the help of additional control buttons on the switch box the positioner can be controlled directly on the machine.

Item No. 6L000500



SWITCH BOX WITH TEACH FUNCTION

The fix installed switch with teach function enables the automation of your work processes. Positions can be programmed, stored and repeated anytime by pressing a button.

Item No. 6L000550



ENDLESS ARM ROTATION

Using this function, the arm can be endlessly rotated around its own axis.

Item No. 6L000300

OCTAGONAL TABLES

The Siegmund octagonal table is used as the standard table for ergonomic working with positioners. The octagonal table is fastened on the positioner with the help of an adapter plate. Besides octagonal tables, square or rectangular tables can be used as well of course.

SYSTEM 28

Bore hole Ø 28 mm | 100x100 mm grid

Material: Steel S355J2+N,
Plasma nitrided and BAR-coated

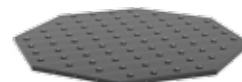
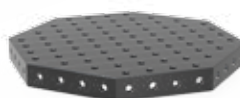


Table size	COMPATIBLE WITH TYPE						TABLE SIDE PANEL 200 MM	TABLE SIDE PANEL 100 MM	WITHOUT TABLE SIDE PANEL
	RP 1250	RP 2000	RP 3000	LP 1200	LP 2500	LP 5000	Plasma nitrided	Plasma nitrided	(25 MM) Plasma nitrided
600 mm	✓	✓	✓	✓	✓	✓			Weight approx. 94 kg Item No. 940600.P
800 mm	✓	✓	✓	✓	✓	✓	Weight approx. 261 kg Item No. 920800.P	Weight approx. 189 kg Item No. 920800.1.P	Weight approx. 139 kg Item No. 940800.P
1000 mm	✓	✓	✓	✓	✓	✓	Weight approx. 412 kg Item No. 921000.P	Weight approx. 291 kg Item No. 921000.1.P	Weight approx. 198 kg Item No. 941000.P
1200 mm	✓	✓	✓	✓	✓	✓	Weight approx. 497 kg Item No. 921200.P	Weight approx. 394 kg Item No. 921200.1.P	Weight approx. 281 kg Item No. 941200.P
1400 mm	✓	✓	✓	✓	✓	✓	Weight approx. 690 kg Item No. 921400.P	Weight approx. 520 kg Item No. 921400.1.P	Weight approx. 389 kg Item No. 941400.P
1500 mm	✓	✓	✓	✓	✓	✓	Weight approx. 758 kg Item No. 921500.P	Weight approx. 579 kg Item No. 921500.1.P	Weight approx. 437 kg Item No. 941500.P
1600 mm	✓	✓	✓	✓	✓	✓	Weight approx. 861 kg Item No. 921600.P	Weight approx. 654 kg Item No. 921600.1.P	
1700 mm	✓	✓	✓	✓	✓	✓	Weight approx. 896 kg Item No. 921700.P	Weight approx. 714 kg Item No. 921700.1.P	
1800 mm	✓	✓	✓	✓	✓	✓	Weight approx. 976 kg Item No. 921800.P	Weight approx. 780 kg Item No. 921800.1.P	
Surcharge adapter plate							Item No. 940000	Item No. 940000	Item No. 940000

Further table sizes are available on request. Upon request, the adapter plate with special connecting hole pattern can be custom-made against a surcharge. Due to customer specific adaptation the weight can vary.

SYSTEM 16

Bore hole Ø 16 mm | 50x50 mm grid

Material: Steel S355J2+N,
Plasma nitrided and BAR-coated

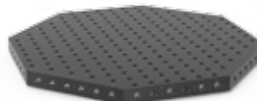


Table size	COMPATIBLE WITH TYPE						TABLE SIDE PANEL 100 MM	TABLE SIDE PANEL 50 MM	WITHOUT TABLE SIDE PANEL
	RP 1250	RP 2000	RP 3000	LP 1200	LP 2500	LP 5000	Plasma nitrided	Plasma nitrided	(12 MM) Plasma nitrided
500 mm	✓	✓	✓	✓	✓	✓			Weight approx. 54 kg Item No. 950500.P
600 mm	✓	✓	✓	✓	✓	✓	Weight approx. 89 kg Item No. 920616.P	Weight approx. 74 kg Item No. 920616.1.P	Weight approx. 63 kg Item No. 950600.P
800 mm	✓	✓	✓	✓	✓	✓	Weight approx. 118 kg Item No. 920816.P	Weight approx. 104 kg Item No. 920816.1.P	Weight approx. 84 kg Item No. 950800.P
1000 mm	✓	✓	✓	✓	✓	✓	Weight approx. 169 kg Item No. 921016.P	Weight approx. 137 kg Item No. 921016.1.P	Weight approx. 111 kg Item No. 951000.P
1200 mm	✓	✓	✓	✓	✓	✓	Weight approx. 226 kg Item No. 921216.P	Weight approx. 189 kg Item No. 921216.1.P	Weight approx. 157 kg Item No. 951200.P
Surcharge adapter plate							Item No. 940000	Item No. 940000	Item No. 940000.1

Further table sizes are available on request. Upon request, the adapter plate with special connecting hole pattern can be custom-made against a surcharge. Due to customer specific adaptation the weight can vary.



We are glad to develop individual solutions for your projects on request.





WELDING TABLES AND CLAMPING SYSTEMS



PRODUCT AND APPLICATION CATALOGUE

Discover the full range of our products
in our product and application catalogues
or on our website www.siegmund.com.



REGULAR SIEGMUND FLYER

In our regular Flyer you can find all important
information and news about welding tables and
accessories as well as current discounted packages.

YOUR DEALER

Bernd Siegmund GmbH

Aehrenstrasse 29 | 86845 Grossaitingen | Germany (Bavaria) | Phone 0049 (0) 82 03 / 96 07 - 0 | Fax 0049 (0) 82 03 / 96 07 - 33
info@siegmund.com | www.siegmund.com

All prices are quoted ex works excl. VAT, packing, freight and duty. Technical changes are reserved.
Our General Terms and Conditions apply. Errors and price changes reserved. One year guaranty.

All texts, pictures and design elements are copyrighted by the Bernd Siegmund GmbH. No part of this flyer may be edited analogously
or digital or in another mode, may be multiplied or published out of the flyer without written approval of the legal owner.