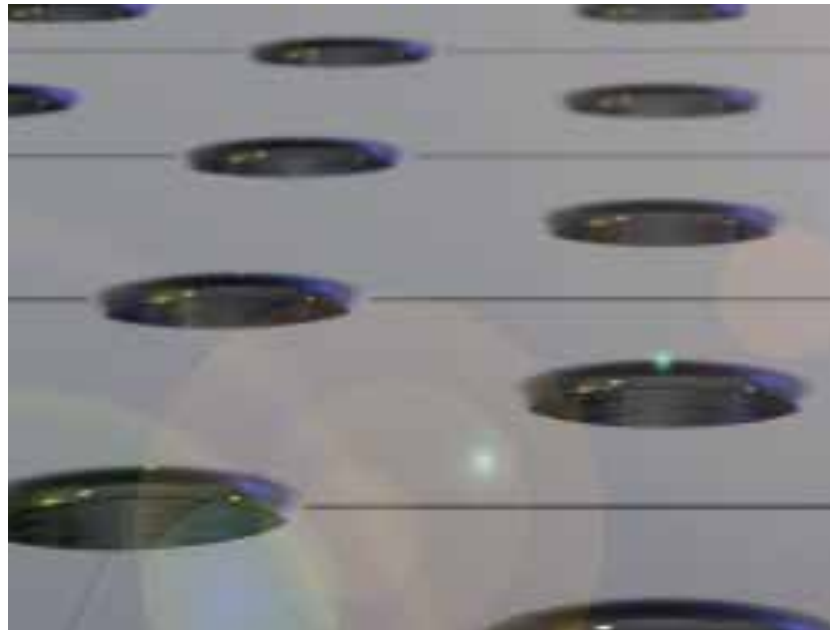


# To build the best welding tables is our aspiration!



Dipl. Ing. Bernd Siegmund



Dear Ladies and Gentlemen,

regardless of whether you process heavy steel components for locomotive- or bridge construction, or minor metalwork - with our welding- and clamping table systems you receive a solid tool, that meets your individual requirements. As solid and reliable as South German Bavaria, where our headquarters are located.

It is here in Großaitingen, close to our state capital Munich and near Augsburg, where inventions such as the Diesel engine, the first submarine or the 6-axis industrial robot Famulus revolutionized the world, where we develop precise products so you can achieve precise results.

There is a lot of Know-How and experience in our welding- and clamping table systems. Not just our experience - yours as well. We directly implemented your suggestions and inspirations in the development of our products.

For example our most current development:  
Professional Extreme.

By combining two hardening processes you receive a welding table harder than tool steel, as well as an exceptional design. We received awards for its esthetic design in Europe and also in the USA.

On this basis we follow our passion to find intelligent, future oriented flexible solutions for you, combined with developing design quality. Read more about our inventiveness from page 12.



Deggingen

## SIEGMUND GROUP - BERND SIEGMUND GMBH

History of today's Siegmund Group starts in the year 1982:

Graduate engineer Bernd Siegmund founds his own engineering office in Augsburg, Germany. Back then he developed facilities, transportation systems, machines and machine parts for automotive- and environmental technology.

Today we are a family group with diverse, legally independent enterprises, operating in different countries. We have a staff of more than 300 colleagues, maintaining global business ties in more than 50 countries.

Our main business sectors are:

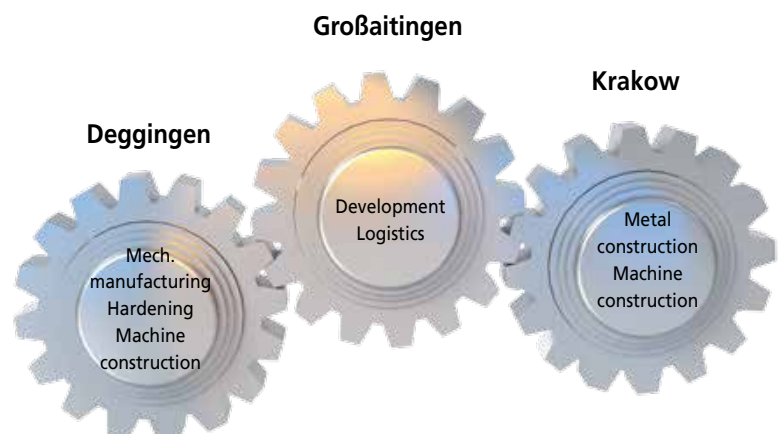
- Development and production of welding- and clamping table systems
- Development and production of machines and machine parts

Surrounding these activity fields we offer corresponding products and accessories. We are also a service contractor for technical issues.

Bernd Siegmund GmbH is headquartered in Großaitingen in the south of Germany, in beautiful Bavaria. It is the epicenter for our welding- and clamping table systems. Since it is here where our design engineers develop the tools to guarantee your and our success.

At our location in Deggingen, Degginger Maschinenbau GmbH, manufacturing of our welding tables takes place, as well as development, production and distribution of our products and services surrounding mechanical engineering.

Main locations of the Siegmund Group:  
Metal area





Großaitingen

## PROFIT FROM OUR BAVARIAN VALUES!

Our headquarters in Großaitingen are located in the heart of Bavaria, in the south of Germany. It is without a doubt one of the leading economic areas within Europe.

Bavarian virtues, a mixture of hightech and tradition, are very important to us. Values like tradition and reliability, courage and open-mindedness towards innovation, are reflected in our day-to-day interaction and products, as well as the way we treat our business partners and customers.

Based on our proximity to Munich, we benefit from its international infrastructure. Especially noteworthy is also the diversity of cultural and regional resources: the magnificent castles and lakes, and of course the worldwide renowned and popular Oktoberfest.



NEUSCHWANSTEIN CASTLE



## Welding- and clamping table systems by Siegmund - a sophisticated and flexible modular construction system...

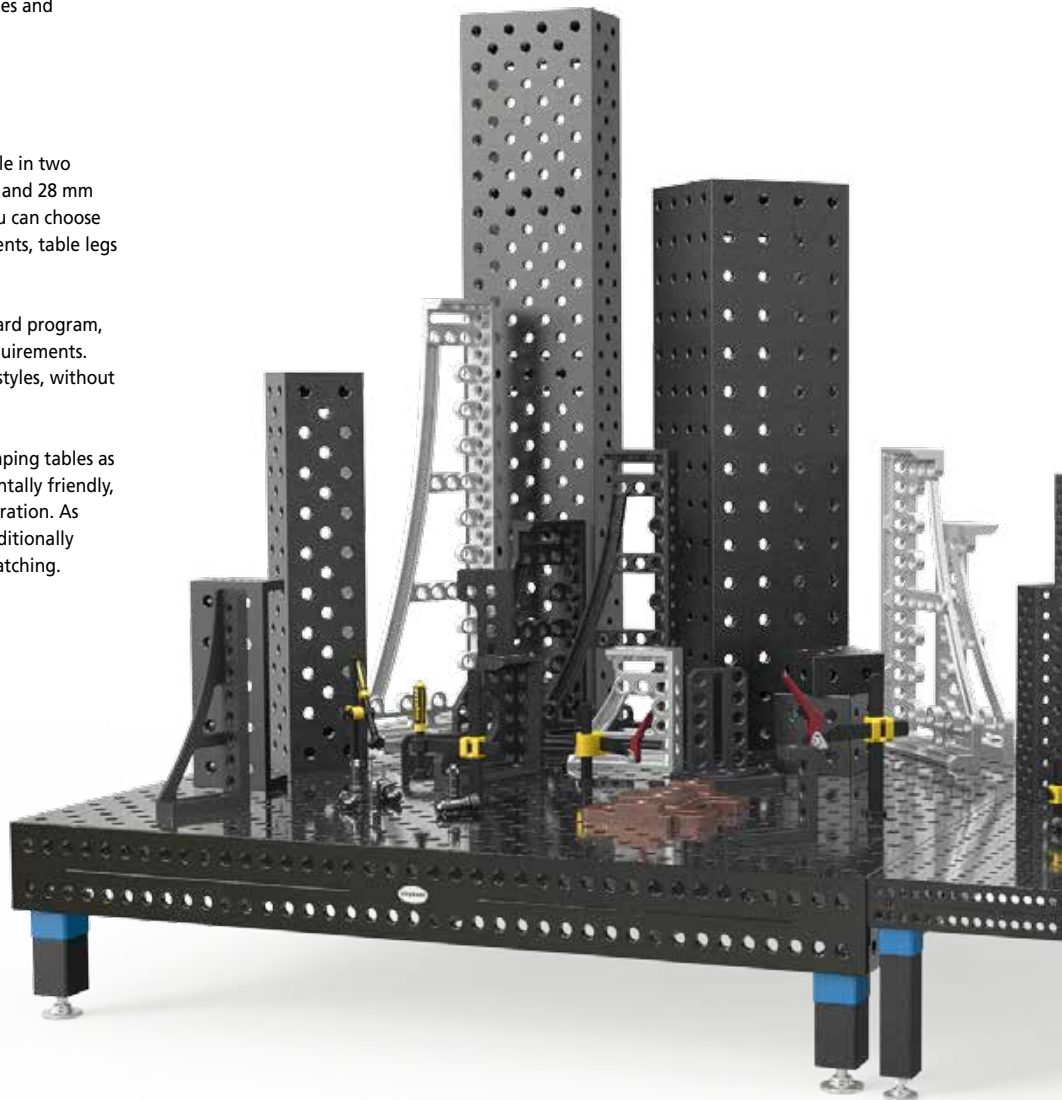
Supported by our welding- and clamping table systems you can accomplish the most complex and challenging applications immediately, since they are based on a sophisticated and flexible modular construction system. It consists of a combination of system boreholes and compatible clamping elements.

### Choose from around 10,000 table styles

Our welding- and clamping tables are available in two basic styles of boreholes - 16 mm (System 16), and 28 mm (System 28). Based on these basic versions, you can choose from a large selection of different measurements, table legs and materials.

Consequently you can choose from our standard program, depending on individual wishes and work requirements. You can freely assemble around 10,000 table styles, without consideration of special sizes.

Since 2009 we improve our welding- and clamping tables as a standard feature by applying an environmentally friendly, thermo-chemical procedure, called plasma nitration. As a result the surface of the welding table is additionally protected from welding spatters, rust and scratching.



# The table that pays for itself! Save time and money with a table built by Siegmund!

Deciding for a Siegmund table will save you cash money! Thanks to the superior quality of our welding tables you receive a tool that helps you to work with significantly more precision and a lower error rate. Based on the modular construction system you can assemble a multitude of possible applications, reducing set-up time as well as saving storage space and costs.



## Calculate for yourself!

The table that pays for itself fast! Thanks to the savings potential (up to 40% working time with substantially higher precision and reduced error rate), the table is profitable after just a short period of time.

### SAMPLE CALCULATION:

Hypothetical costs per metal worker/year incl. additional expenses.

**60,000 \$**

The savings potential is around 40% during the production of prototypes with high down times.

that equals

**24,000 \$**

At a realistic life span of 10 years for a system table this equals a cost savings of:

**240,000 \$**

## Just for you - additional services



We don't "just" sell welding- and clamping tables, but also a "surrounding" package of services and accessories.

### YOU GET

- ☐ a wide range of clamping elements like squares, stops, bolts, screw clamps and much more, to create any kind of clamping device.
- ☐ individual and expert consultation, as well as suggested solutions for complicated and costly constructions.
- ☐ solutions to your individual clamping projects by CAD-data (SAT, DXF or STEP).
- ☐ custom-made design. From the planning stage to completion we assist you to master even the most difficult challenges, like the set-up of oversized work platforms and such.
- ☐ complimentary, professional training at our headquarters. You can see live demonstrations of application examples and set-ups.
- ☐ "real" application examples on the internet true to the motto: learn from others.
- ☐ 3-D set-up examples to download from our homepage.
- ☐ special offers on [www.siegmund.com](http://www.siegmund.com)
- ☐ our complimentary flyers with special offers and news about our products. The flyer is published 5 times a year in 18 languages, with an edition of 200,000.
- ☐ communication, possibly even in your native language. In our company 10 languages are spoken. The current catalogue as well as our internet presentations are available in 27 languages.
- ☐ our QR-codes with direct access to our product- and company videos.
- ☐ the option to test our products worldwide at more than 40 trade fairs per year and to meet us in person.

## We accept responsibility

As a family business our main concern is taking responsibility for the welfare of our staff. By taking measures like creating an appropriate infrastructure, as well as a diverse selection of training opportunities, we are investing in the framework of our own success. Especially the consistent designation of trainee positions for young people is very dear to us.

Closely linked to climate- and environmental protection is the issue of energy. We have been making an active contribution by utilizing energy more efficiently within our facilities to reduce emissions. As a result we have decided to use a hardening process that is strictly based on the

application of hydrogen, oxygen and nitrogen, the main ingredients of air and water. In addition our warehouses and buildings are heated by thermal discharge.

At our headquarters in Großaitingen we use one of the cleanest sources of energy altogether: the immeasurable energy of the sun. Our photovoltaic installation generates more energy than we consume.

It is not just the climate and the environment that benefit from our commitment. When we pay attention to our energy footprint, we also have an economical advantage as well.







You order - we deliver reliably and quickly



OUR DEMAND: PROMPT AVAILABILITY

Facilitated by our convenient location and our close proximity to the state capital Munich, we are in a perfect position to supply regional facilities, as well as customers abroad.

Our headquarters in Großaitingen facilitates a total storage space of 5,000 m² for our welding- and clamping tables and accessories. All inquiries are centrally processed at this location.

We always carry a large amount of inventory to guarantee prompt delivery.

Please pay attention to the suffixes following the item numbers:

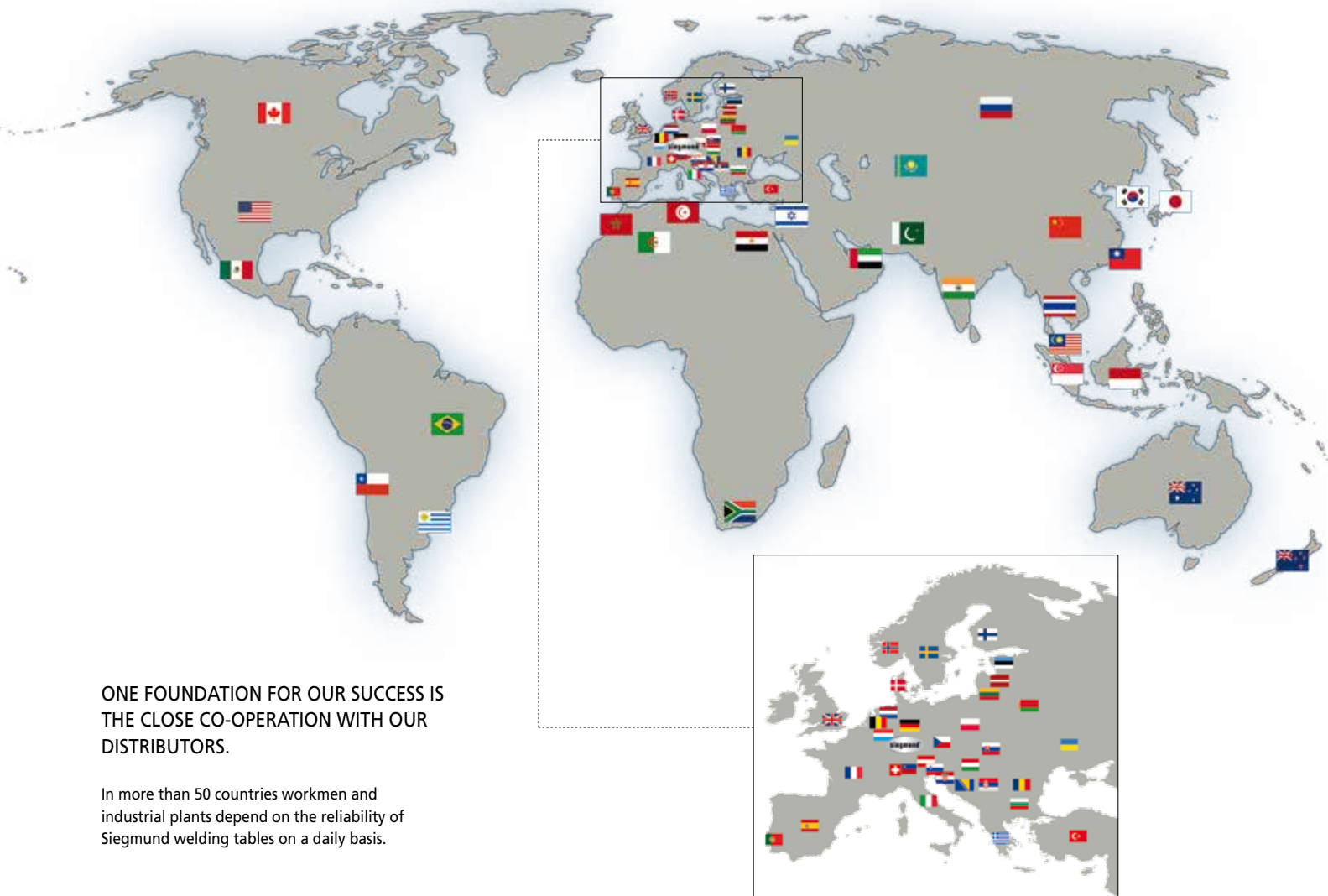
Length: (a)	Width: (b)	MS: (d)	Weight:	Item No.
500 mm	50 mm	25 mm	3,30 kg	2-280427 ●
500 mm	50 mm	25 mm	3,30 kg	2-280427.C ○

- Stock item:  
Delivery within 1-7 days if item is in stock.  
(Applicable only within Germany and closer Europe;  
delivery time depending on size of order).
- Item is made to order; delivery as soon as possible.

( . ) = Price on request



## We are a global supplier

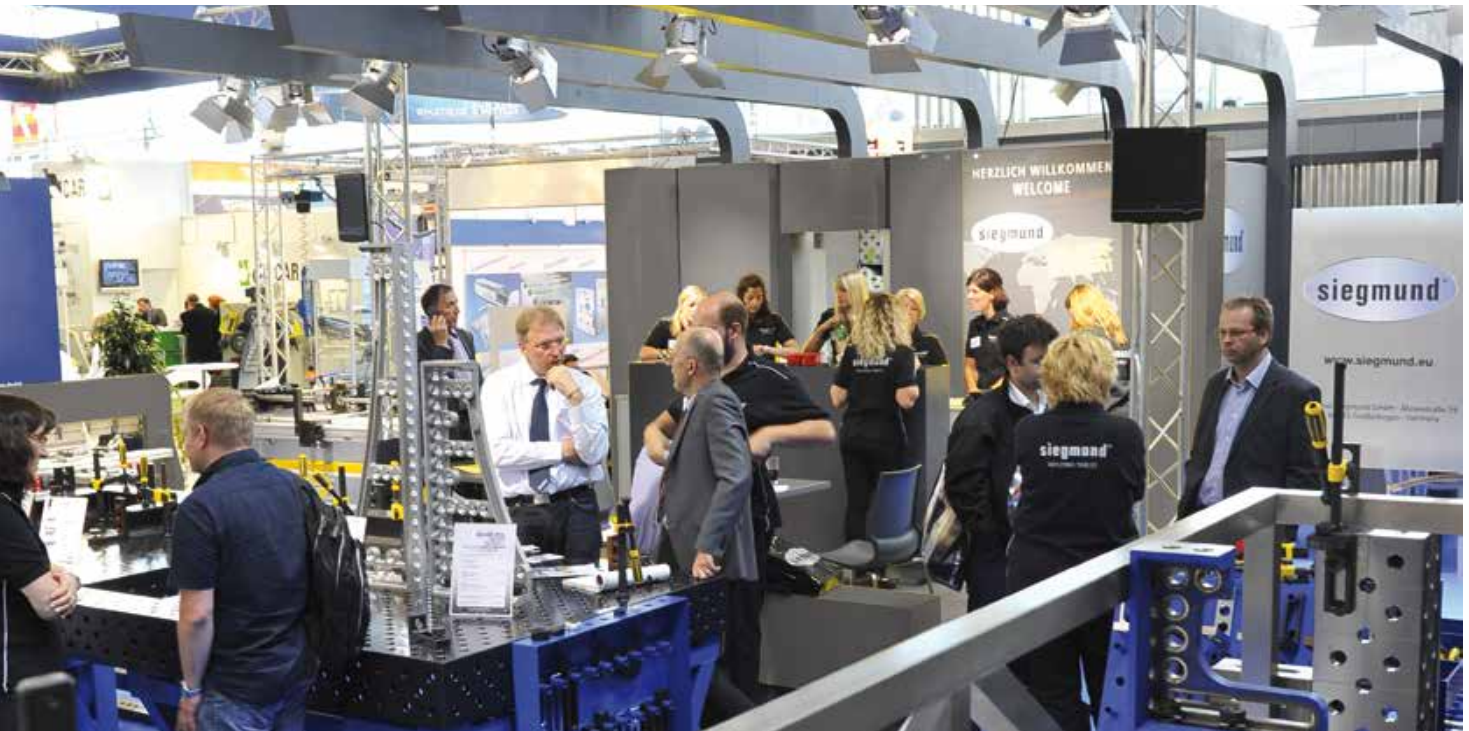


ONE FOUNDATION FOR OUR SUCCESS IS  
THE CLOSE CO-OPERATION WITH OUR  
DISTRIBUTORS.

In more than 50 countries workmen and  
industrial plants depend on the reliability of  
Siegmund welding tables on a daily basis.

Algeria	China	India	Malaysia	Russia	Taiwan
Australia	Croatia	Indonesia	Mexico	Serbia	Thailand
Austria	Czech Republic	Israel	Morocco	Singapore	Tunisia
Belarus	Denmark	Italy	Netherlands	Slovakia	Turkey
Belgium	Egypt	Japan	New Zealand	Slovenia	Ukraine
Bosnia-Herzegovina	Estonia	Kazakhstan	Norway	South Africa	United Arab Emirates
Brazil	Finland	Latvia	Pakistan	South Korea	United Kingdom
Bulgaria	France	Liechtenstein	Poland	Spain	Uruguay
Canada	Greece	Lithuania	Portugal	Sweden	USA
Chile	Hungary	Luxembourg	Rumania	Switzerland	

## Issues, trends, developments and good conversations



### TRADE SHOWS ARE EXTREMELY IMPORTANT TO US

Trade shows are a reflection of issues, trends and developments in the industry. Trade shows offer the opportunity to exchange experiences, ideas and know-how. Trade shows are the ideal platform to introduce ourselves and our products. Trade shows are a meeting point for good conversations and doing good business.

....TRADE SHOWS BRING US TOGETHER WITH YOU.

You can find us at about 40 trade shows worldwide!

Please find the  
trade show calendar  
at:

[www.siegmund.com/  
VExhibition](http://www.siegmund.com/VExhibition)



Clicking the QR-Code takes you directly to the  
fair schedule. We are looking forward to you!

## 27 languages - always up-to-date with just one click

As a market leader for precision welding tables we have business ties in more than 50 countries. Therefore an international web-presence is absolutely necessary to us.

It is our aspiration to communicate in your national language. We are already presenting ourselves in 27 languages in this catalog as well as on the World Wide Web.

### YOU CAN WORK WITH [WWW.SIEGMUND.COM](http://WWW.SIEGMUND.COM)

On [www.siegmund.com](http://www.siegmund.com) you receive information about our company and products, as well as a tool you can work with. Whether you need sales support or guidance, with just a few clicks you can find out how to precisely



clamp and process your workpiece on Siegmund welding tables, assisted by our accessories like prisms, quick-release clamping bolts or squares.

Or watch how "others do it". A variety of companies from different industries demonstrate how they apply our welding- and clamping table systems.

Numerous videos about scope and operating range, our trade-show presentations, or the remarkable endurance test of our extremely hard welding table "Professional Extreme", give you a digital view into the world of Siegmund.

Please log in and take advantage of special offers and bargains only at [www.siegmund.com](http://www.siegmund.com)





## Innovative strength to secure your and our success

We are the global market leader in the welding table industry, and would like to continue our vision for the future to keep building the best welding table worldwide.

To accomplish this goal, it takes foremost innovative strength and determination. We are driven in this direction by our consistent effort, our sense of future developments in the industry, and the close communication with you. We are constantly prepared to further develop our products and services, to allow you to concentrate on your core competences to remain competitive and successful.

## Our new developments:

### PROFESSIONAL EXTREME

- harder, tougher and more appealing in look and surface feel

### BASIC PIPE CLAMP UNIVERSAL

- an inexpensive clamp for all tasks

### STOP AND CLAMPING SQUARE 500 G WITH ROTATION ANGLE

- two rotation angles enable smooth clamping

### SUPPORT AND FOUNDATION RAIL - WITH INTEGRATED ROUND RAIL

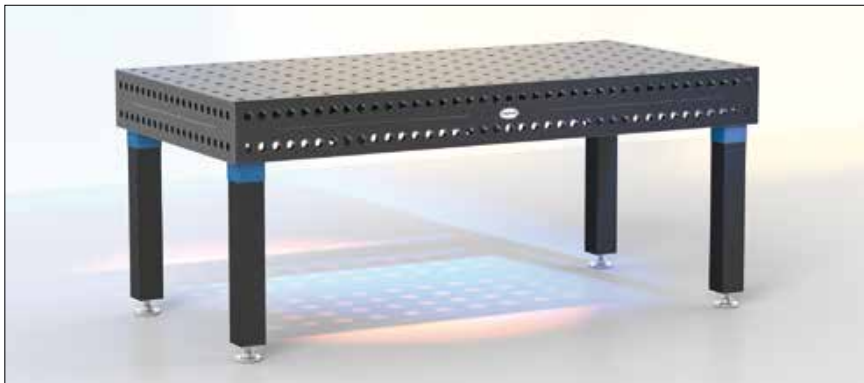
- substantially easier and faster to assemble







# Extremely hard and exceptionally well designed: Professional Extreme



Item No. 280020.X



With Professional Extreme we are providing you with a tool that meets your individual requirements. It is extremely hard and resistant in texture, and at the same time well designed in look and feel. This is one more reason that we are Number 1 in welding tables. We don't just want to keep this position, we will also expand it by constantly enhancing our products to optimize your work processes.

Its name reveals its feature: Professional Extreme is harder than some tool steel or Japanese knives. With more than 750 Vickers, since Professional Extreme is double-hardened. The material property of the table consists of a special, pre-hardened steel. We additionally applied a thermo-chemical procedure, called plasma nitration, to harden the surface of the table.

All table components were revised: Professional Extreme is equipped with larger base plates and table legs, as well as more ribbing on the underside of the table. We also rounded all boreholes and radiuses and improved its design.

Watch Professional Extreme live meeting all challenges, and convince yourself of its extremely hard properties:

You can also find the  
"hardness test" at:

[www.siegmund.com/  
VHardness](http://www.siegmund.com/VHardness)



## YOUR ADVANTAGE WITH PROFESSIONAL EXTREME AT A GLANCE:

Professional Extreme is,

- more rust-resistant,
- more resistant against adherence of welding spatters,
- more resistant against impact or scratching, and higher spot loads,
- more stability,
- more loadability and efficiency,
- less scratch-prone when moving heavy components,
- perfectly designed, enabling easy and fast insertion of bolts and accessories into boreholes.

More about "Extreme Tables" starting page 96 (System 28) and 444 (System 16).



# An inexpensive clamp for all tasks:

## Basic Pipe Clamp Universal



Item No. 280604



Item No. 280604



Item No. 280604

With this new Basic Pipe Clamp you get an economical tool that helps you master all clamping tasks. It is additionally equipped with a pivoting arbor (at an angle of  $\pm 42^\circ$ ), allowing diagonal clamping of components. In combination with the height- and length adjustable horizontal and vertical strut extremely large distances can be spanned.

### YOUR BENEFITS AT A GLANCE:

- The pivoting arbor (at an angle of  $\pm 42^\circ$ ) enables vertical as well as diagonal clamping of your component. The additional pivot joint balances tilting of high components.
- Horizontal and vertical struts can be freely adjusted, enabling precise setting of distances to the component.

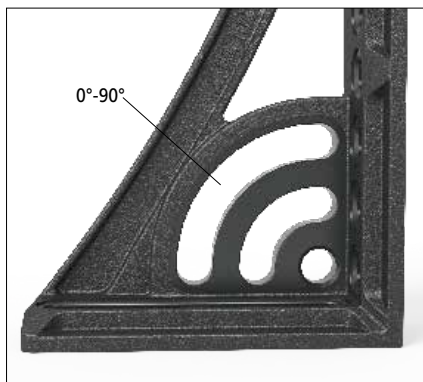


More about "Basic Pipe Clamps" starting at page 328.

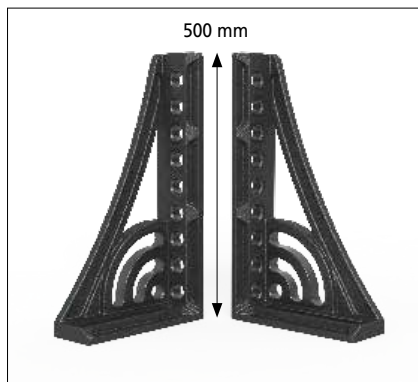




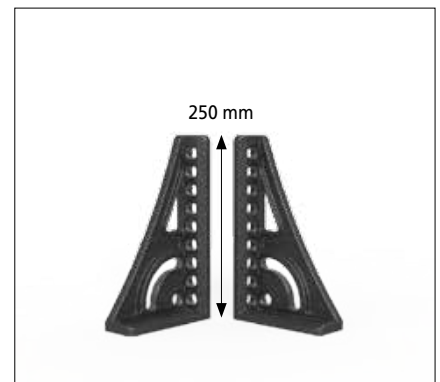
# With additional angles of rotation: Stop and Clamping Square System 16 and System 28



Item No. 280164 / 280165



Item No. 280164 / 280165



Item No. 160161 / 160163

A new Stop and Clamping Square with integrated angle of rotation was developed by combining our angle of rotation with our Stop and Clamping Square.

Based on the additional angle of rotation, a fix oblong hole, you can freely adjust and fasten your Squares. You can precisely fix your component infinitely from 0° to 90°.

## YOUR BENEFITS AT A GLANCE:

- The additional angles of rotation enable precise clamping and adjustments in countless angle settings.
- You receive a tool made of premium cast iron GGG40, incl. plasma nitration. This prevents scratching and denting when moving extremely heavy and sturdy components.
- Radiuses were rounded - based on the new design.
- The combination of angle of rotation and system boreholes result in a multitude of clamping options.

More information about "Stop and Clamping Square" on pages 264 (System 28) and 526 (System 16).





## Much easier and faster to install:

### Support and Foundation Rail - with integrated round rail



We improved our reliable rail system to make working with large components much easier.

The combination of our support- and foundation rail system with our round rail system has new and crucial advantages for you.

#### YOUR BENEFITS AT A GLANCE:

- The new support- and foundation rail with integrated round rail is much easier and faster to assemble. You have the option to install above-floor or underfloor. The rails can be firmly bolted to the ground or countersunk in the factory work floor. If requested, we will gladly carry out the installation for you.
- You can easily slide the rail-mounted welding- and clamping tables along the movement direction of the rails into different positions.

More about the "Rail System" starting at page 166.

We have updated over 100 products technically and in design for you:

**SCALE**  
on Stops and Squares

**NEW SQUARE HEIGHT**  
750 mm in System 28

**NEW VERSIONS**  
T-slot Table now also available  
with lengthways and lateral slots



Illustration shows a selection of updated products.

**NITRATION**

many clamping devices are now also available nitrided

**RADIUSSES**

on Stops and Squares

**OPTIMIZED**

Squares and Stops were widened, resulting in more stability

**ALUMINUM**

Squares now also available in System 16



Top functionality combined with advanced design -  
are distinguishing Siegmund products



More about "Professional Extreme 850" starting page 98.



## Some of our design awards at a glance:

**1| T-Slot Table**  
1,0 x 1,0 m  
280010.N



reddot design award  
winner 2012

see page 128

**2| Universal Bolt**  
280532



**3| Clamping Square**  
280144.P  
280134.P



product  
design award  
2013

see page 301  
see page 268

**4| Professional Extreme**  
2,0 x 1,0 m  
280020.X



reddot design award  
winner 2013

see page 110

**5| Professional Extreme**  
2,0 x 1,0 m  
280020.X



**6| Aluminum-Titanium  
Square**  
280140  
280141



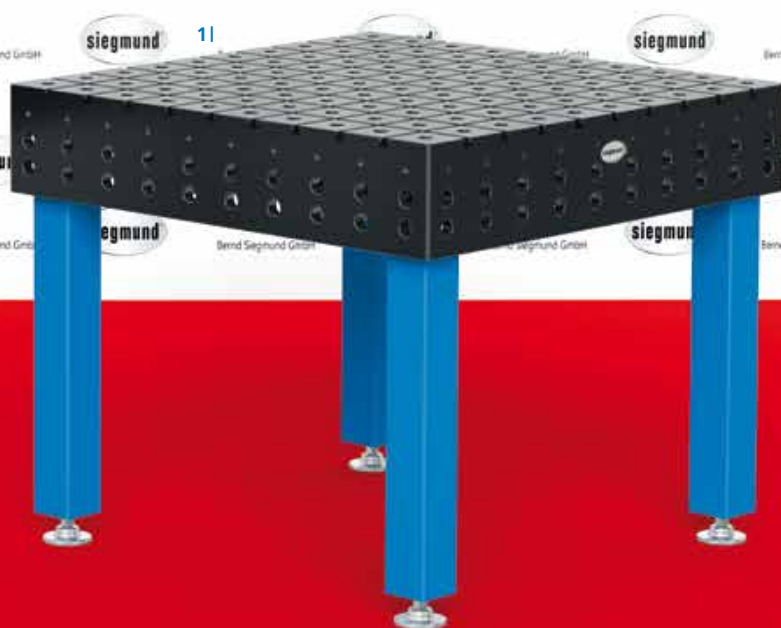
see page 110  
see page 270

**7| Fast Clamping Bolt**  
280510



German  
Design Award  
SPECIAL  
MENTION 2014

see page 300



**Top functionality combined with advanced design  
are distinguishing Siegmund products**

All the awards we have received in the past at international design competitions are a recognition and incentive at the same time, to continue on this creative and innovative path with enthusiasm. We invite you to join us!

# Siegmund in action

Regardless of whether it is a small workshop or a well-known industrial plant, prototype construction or mass production, with or without robotics:

Our welding and clamping table systems are used in a multitude of industries!

62



30



40



32

68



38



64





54



36



44



56



70



52



50

All texts, images and design elements are subject to copyright by Bernd Siegmund GmbH. No section of the following pages is permitted to be edited analogically, digitally or in any other way, duplicated or published beyond this catalog.

01 | SHEET METALL  
PROCESSING

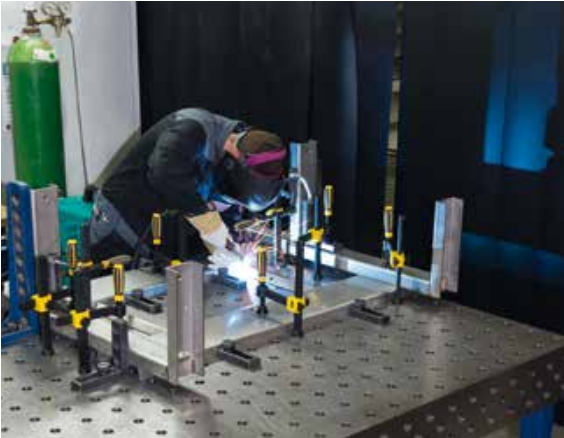
SOURCE:

W. NUSSER GMBH

SCHWABMÜNCHEN, 2013



## Nusser - Sheet metall processing



Shown is the tacking of a substructure framework for a metal housing. After completion it serves in the food industry.

It is plain to see, that the surface texture of the Siegmund plasma-nitrided table still prevents the adherence of welding spatters, even after many years of service.



02 | LOCOMOTIVE  
CONSTRUCTION

SOURCE:

SIEMENS AG

MUNICH, 2013



## Siemens - Locomotive Construction



A locomotive runs through several workstations during the production process at the Munich plant.

In this workstation the shell of the base frame is clamped, and additional components are tacked and welded. The floor panel installation also takes place here, due to the specifically developed rotation mechanism.

The 18 meters long base frame has a total weight of approx. 10 tons.





**03 ROLLERCOASTER**

SOURCE:

MAURER SÖHNE GMBH & CO. KG

MUNICH, 2013



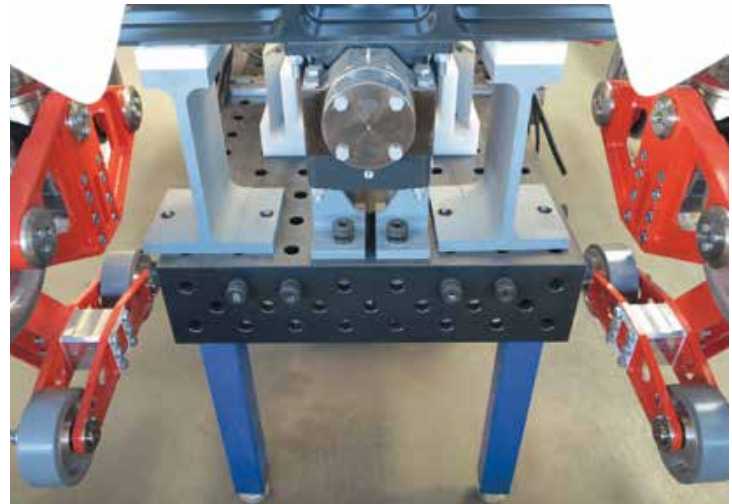
### Maurer Söhne - Theme Park Attractions

A 80x20 m factory hall was completely constructed with Siegmund support- and foundation rails. Due to the extremely high workloads, the boreholes were reinforced with annealed bushings. Installation was carried out by Siegmund supported by state-of-the-art 3D laser technology.

By using a specific platform system consisting of single elements, manufacturing equipment can be connected with the rail system. Platform components as well as Siegmund tables, can be randomly positioned and clamped, creating maximum flexibility.

Due to the well-spaced rail system, Maurer is capable of implementing a multitude of projects - e.g. the world's largest mobile Ferris wheel was constructed on the Siegmund rail system.

Illustrations are demonstrating how rollercoaster carts are assembled and adjusted on Siegmund tables, using templates provided by customer. Due to high manufacturing precision, maximum safety of fairground rides can be guaranteed.





04 | SHIPBUILDING

SOURCE:

NOBISKRUG GMBH

RENDSBURG, 2011



## Nobiskrug - Shipbuilding



Working on six Siegmund tables, boatyards need up to 5600 m of piping to build a single luxury yacht.

Precise installation of the pipe systems requires minimum production tolerance.





05

STAINLESS STEEL  
PROCESSING

SOURCE:

JÜRGEN HACKINGER

WALDKIRCHEN /  
LÄMMERSREUT, 2013

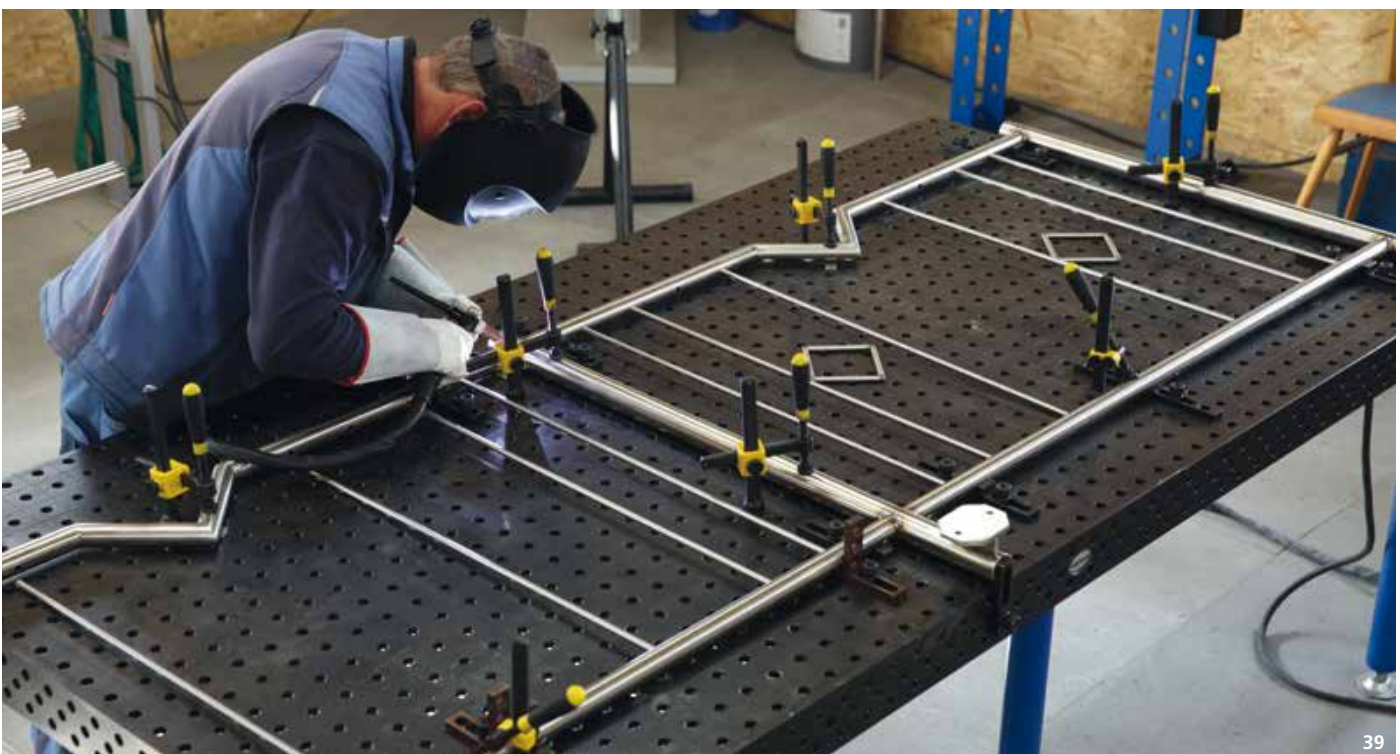


## Jürgen Hackinger - Balustrade Building



Illustration shows production of a stainless steel balcony rail for a single family home with a length of 11 m.

The basic equipment of the newly furnished workshop consists of Siegmund tables and tool-sets.





06

## BRIDGE CONSTRUCTION

SOURCE:

BUILDING COMPANY  
MATTHÄUS SCHMID

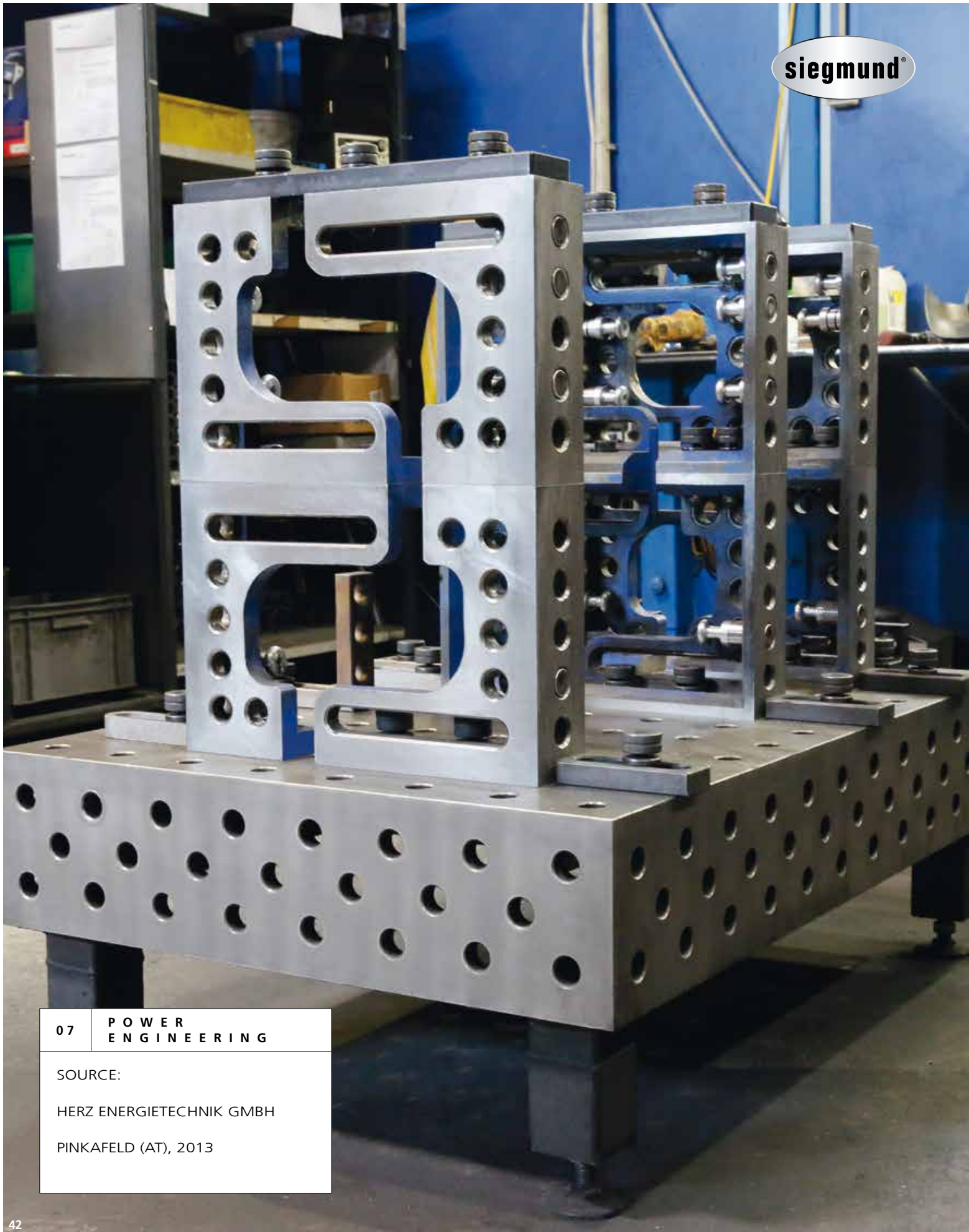
BALTRINGEN, 2011





## Matthäus Schmid - Bridge Construction





07 | POWER  
ENGINEERING

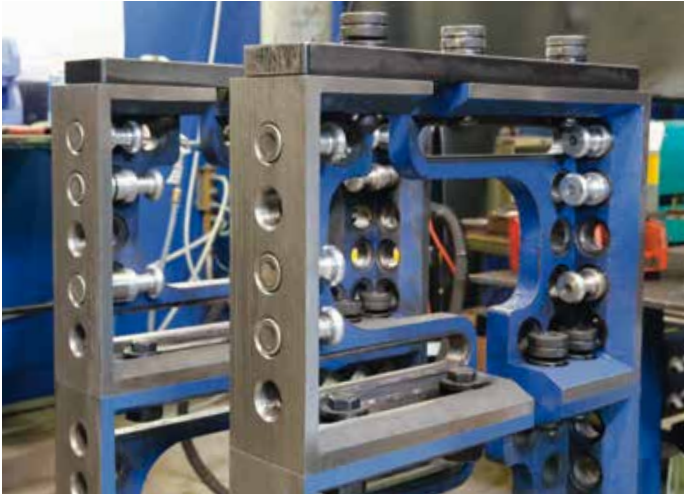
SOURCE:

HERZ ENERGIETECHNIK GMBH

PINKAFELD (AT), 2013



## Herz Energietechnik GmbH - Wood Gasifier Boilers



You can see the production of a wood gasifier boiler for logs and wood briquets. The boiler is built on a Siegmund table with shortened table legs, since most of the welding work during the production process takes place in the upper part of the workpiece.

To be able to work effectively and quickly, cast iron squares matched to the size of the boiler, are clamped on the table. Assisted by magnetic clamping bolts the exterior sheeting of the boiler is clamped within seconds, and can be tacked together after just a few hand grips.

The dimensions of a boiler are 1,400 x 600 x 1,400 mm, weighing 515 kg.





08

# UTILITY VEHICLE CONSTRUCTION

SOURCE:

MAN BUS SP. Z O.O.

STARACHOWICE (PL), 2014

siegmund®





## MAN Poland - Prototype Construction Utility Vehicles

In Starachowice prototypes and mock-ups of busses are constructed and then shipped to Munich for stress tests. After successfully completing the testing phase, they can go into production.

To meet constantly changing demands, two different systems were installed. One system consists of a Siegmund support- and foundation rail above-floor, serving as a base for a setup of table tops and U-squares. The second system is a combination of a Siegmund round rail and a Siegmund support- and foundation rail, with four movable Siegmund tables on top.

Illustrations show production of a "mock-up" in the pre-installed device. It is equipped with a new generation of bus doors. They are manufactured on the second system.





SOURCE:

MAN BUS SP. Z O.O.

STARACHOWICE (PL), 2014





# UTILITY VEHICLE CONSTRUCTION

IN THE FIELD

## MAN Poland - Prototype Construction Utility Vehicles







09 | STEEL  
CONSTRUCTION

SOURCE:

MARKTHALER GMBH & CO. KG

KAUFBEUREN, 2011



## Markthaler - Steel Construction

Illustrations show production of a special container, serving as a collection tank for bore fluids. It is used in civil engineering to drill holes for foundation posts. The accumulated bore fluid is collected in it and cleaned. To stabilize the borehole, the bore fluid is pumped back afterward.

By using Siegmund tables no templates or devices have to be produced, reducing low volume production time by 20-25%.

The container weighs 6.4 tons and is 10 m wide, approx. 2.5 m deep and 2.5 m high.



SOURCE:

WP PERFORMANCE SYSTEMS GMBH

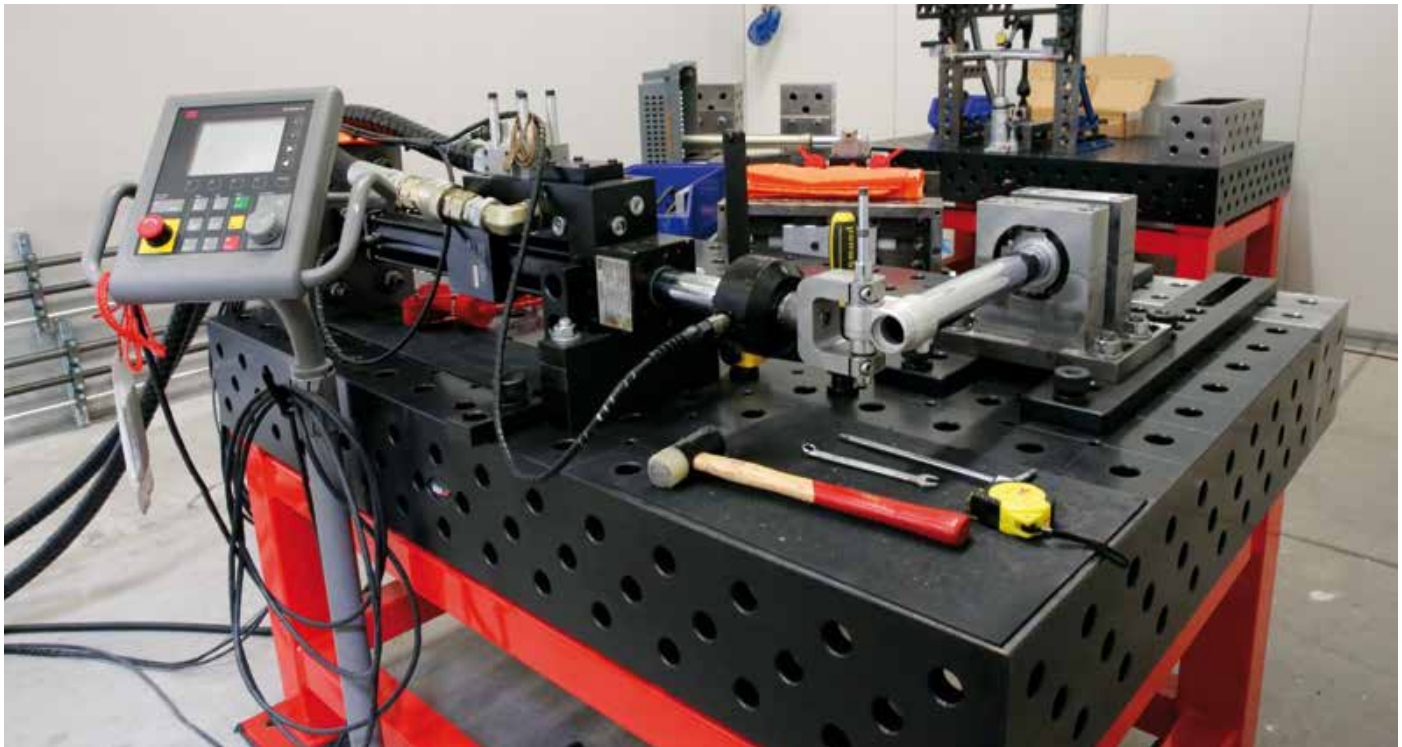
MUNDERFING (AT), 2013

siegmond®





## WP Performance Systems - Stress Tests Motorcycle Technology



Their in-house test center conducts static and dynamic component testing. Depending on material and stress situation the test duration is between 3 and 80 hours per test object.

Illustrations show quality control of telescopic steer tubes.





SOURCE:

METALLBAU GÖPPEL

GROSSAITINGEN, 2011

siegmond®





## Göppel - Metal Construction



Fastening, cutting, sanding, welding, measuring - in the sophisticated balustrade construction industry it is hard to imagine working without modern clamping systems.

Balustrade builders are supported by Siegmund welding tables even during difficult rail design processes. Supported by appropriate bending devices there are almost no limitations to creativity.

Siegmund clamping devices open up the third dimension precisely and efficiently.





12	<b>HOISTING AND CONVEYING ENGINEERING</b>
----	---

SOURCE:

SEMET MASCHINENBAU  
GMBH & CO. KG

BRACKENHEIM, 2013



## Semet - Telescopic Sliders

Illustration shows a telescopic slider for truck manufacturing being checked for sag and compliance with tolerances.

Aided by the rail system and the U-squares the crane stops are readjusted. The stops serve later on as fixtures for the telescopic slider.

The entire manufacturing up to the final inspection takes place on Siegmund products.

A telescopic slider is 8 m long, weighs approx. 2 tons and has a bearing load of approx. 1.5 tons.



SOURCE:

ETA HEIZTECHNIK GMBH

HOFKIRCHEN (AT), 2013

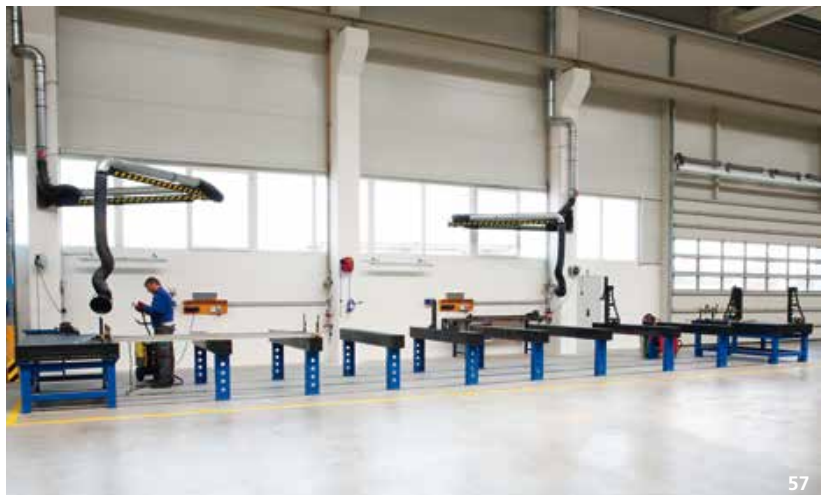


## ETA - Heating Technology



An agitator head for a wood chip warehouse is built on a Siegmund table.

The production time per piece is approx. 1.5 hours. The finished workpiece has a diameter of 6 meters.







# 14 LOCOMOTIVE CONSTRUCTION

SOURCE:

VOITH TURBO LOKOMOTIVTECHNIK  
GMBH & CO. KG

KIEL, 2011



## Voith Turbo - Locomotive Construction



Illustrations show production of diesel-hydraulic locomotives.

Plasma-nitrided tables are low-maintenance, thereby facilitating speedy retrofitting. Siegmund functional clamping devices also enable quick processing of low volume production.

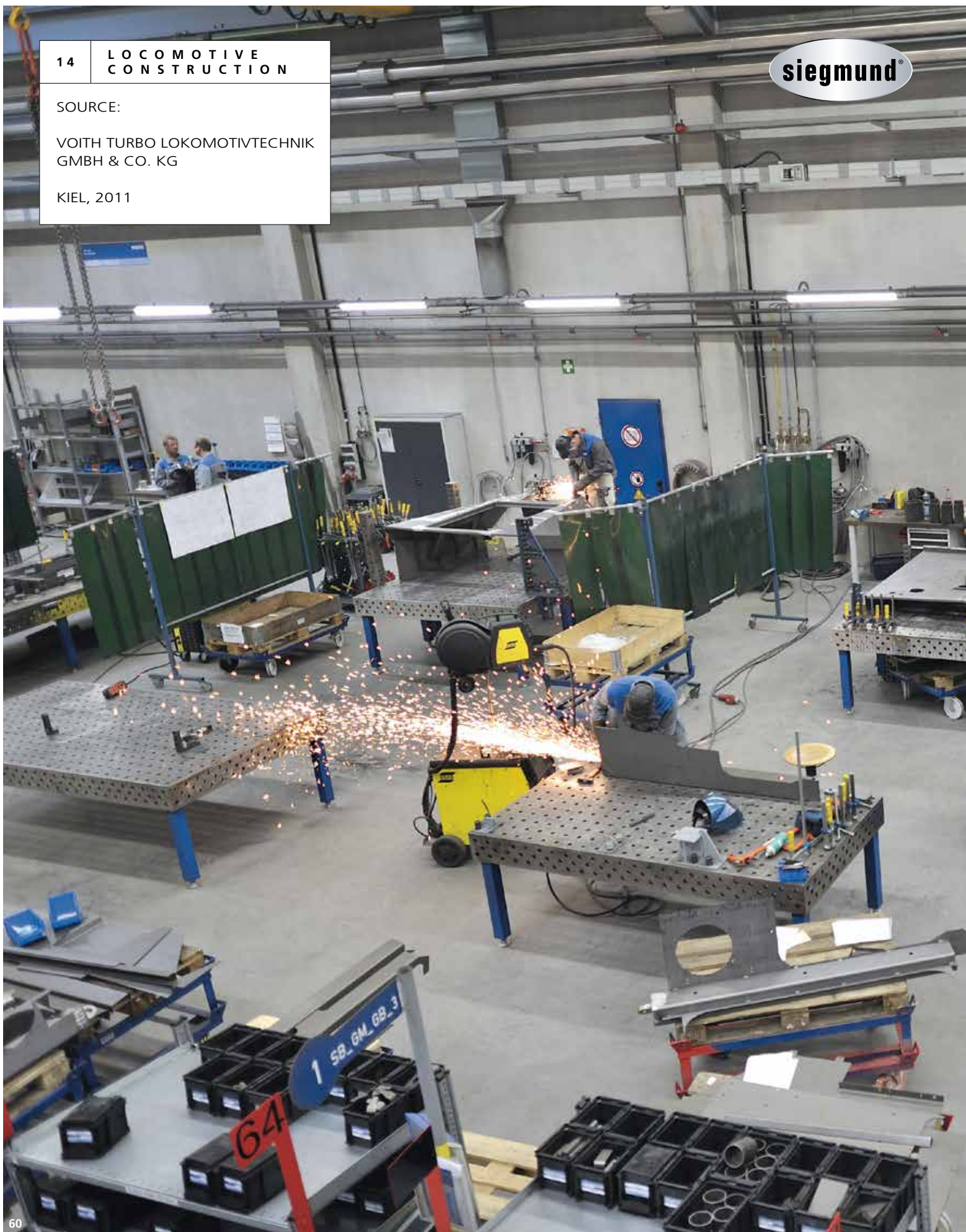




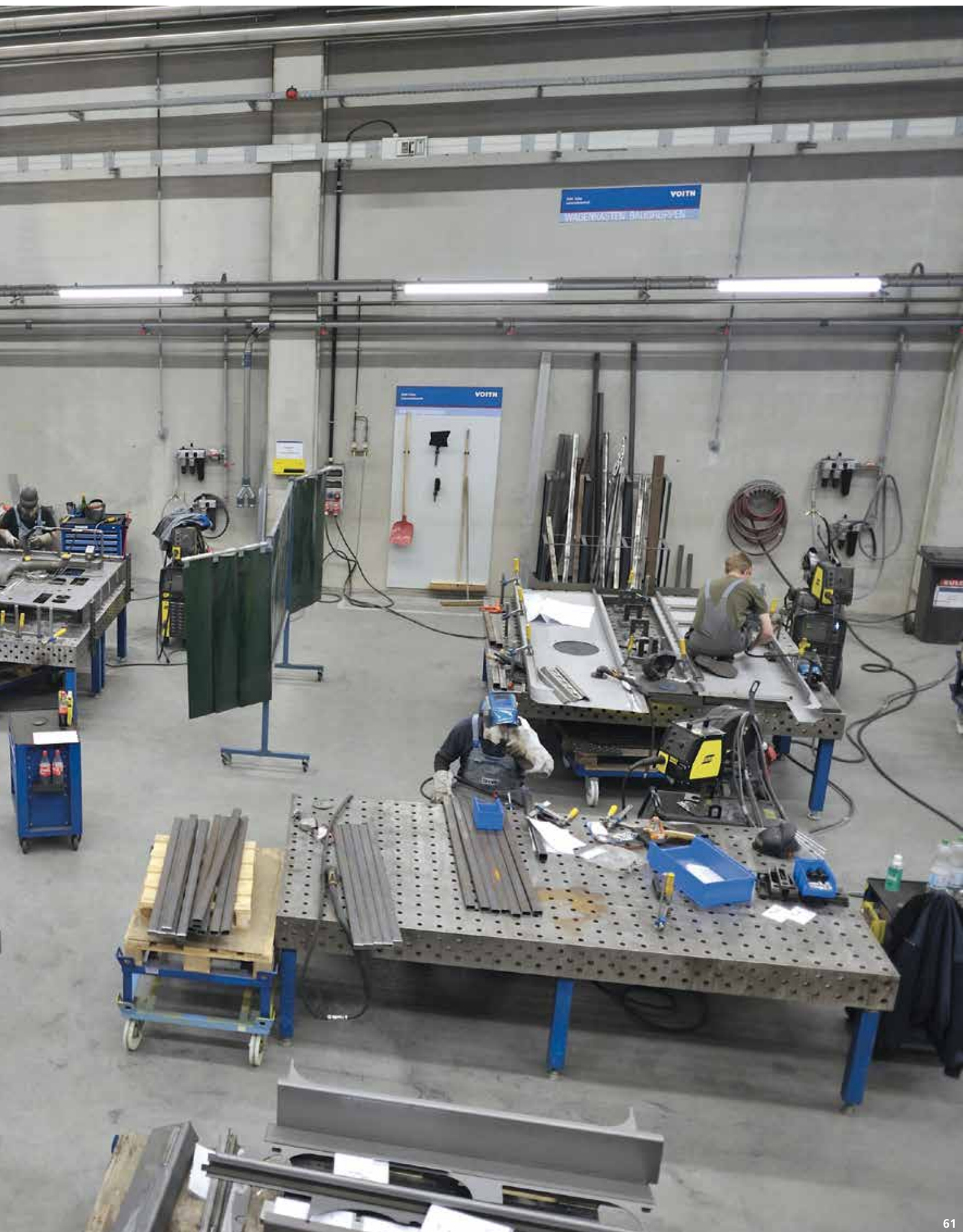
SOURCE:

VOITH TURBO LOKOMOTIVTECHNIK  
GMBH & CO. KG

KIEL, 2011







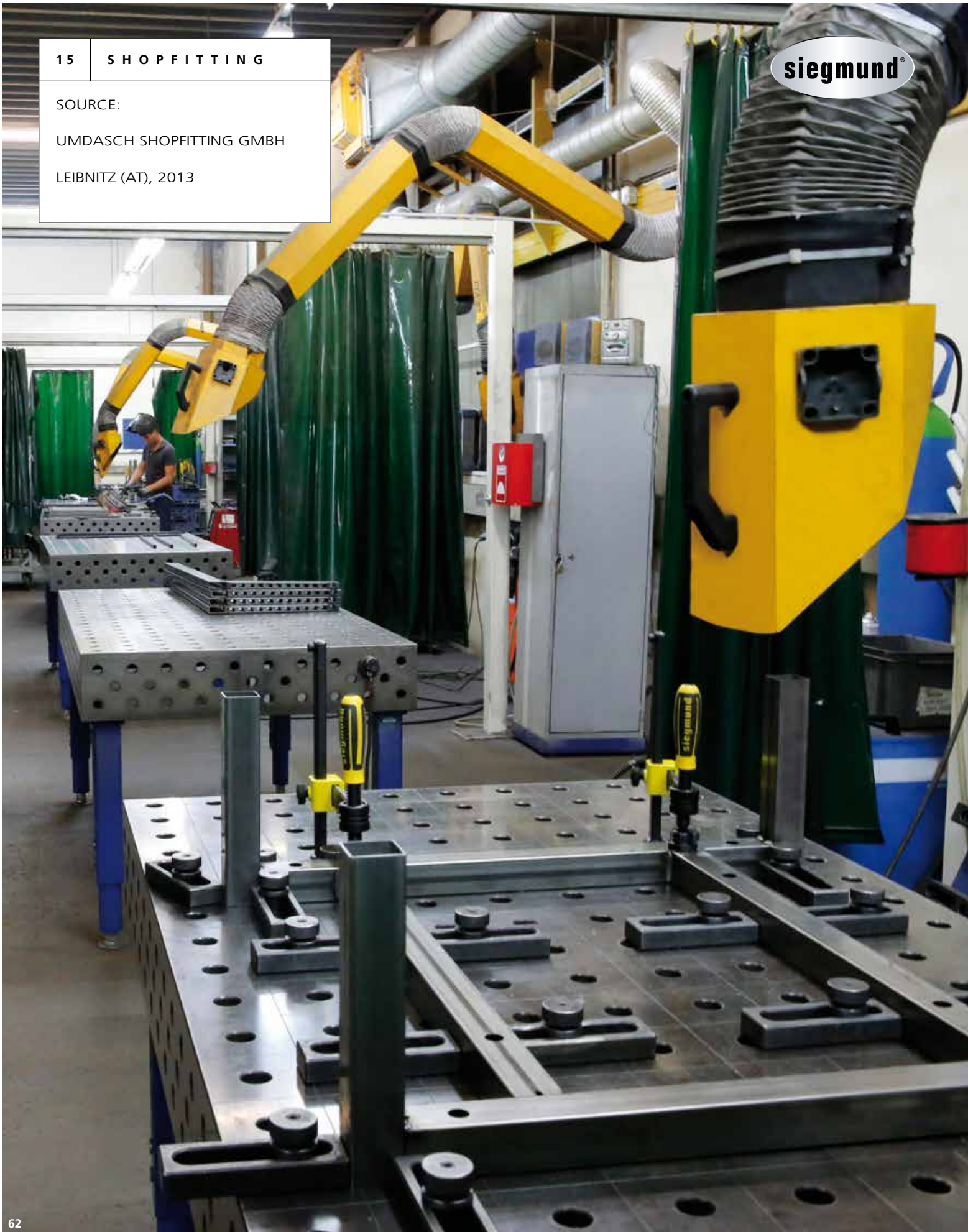


SOURCE:

UMDASCH SHOPFITTING GMBH

LEIBNITZ (AT), 2013

siegmund®





### Umdasch Shopfitting - Modular Shopsystem Elements



Siegmund tables are utilized in the custom design department for low volume and special series production, as well as for prototypes.

Illustrations show production of shopsystem elements "Basixx", e.g. stands and leg elements. Later on they are configured to build store fixtures.





16 METAL  
CONSTRUCTION

SOURCE:

METALLBAU BÖHM GMBH

EICHSTÄTT, 2013



## Metallbau Böhm - Custom Design



Here you can see how an emergency stairway for the cafeteria of a middle school is built on top of several interconnected Siegmund tables.

The tub-shaped construction weighs approx. 4 tons, and it is welded together from 15 mm steel sheet parts. The stairway is 10 m long, 1.35 m wide and 1.60 m high.





17 | PLANT  
MANUFACTURING

SOURCE:

GROB-WERKE GMBH & CO. KG

MINDELHEIM, 2011



## GROB-WERKE GmbH & Co. KG - Machine Tools and Plant Construction



Facilitated by Siegmund tables, individual customer requirements to build complex machines, are fulfilled.

The sophisticated Siegmund system facilitates quick and flexible retrofitting of clamping devices, presenting a time-saving solution for low volume production or custom design.





SOURCE:

STADLER BUSSNANG AG

BUSSNANG (CH), 2014

siegmund®





## Stadler - Train Construction



A canopy and crash modules for a railcar are manufactured. They are made of aluminum, as well as other individual parts, and fabricated on Siegmund tables. Afterwards the components are assembled and welded together to create a railcar.





SOURCE:

HANS GREUB AG

LOTZWIL (CH), 2014

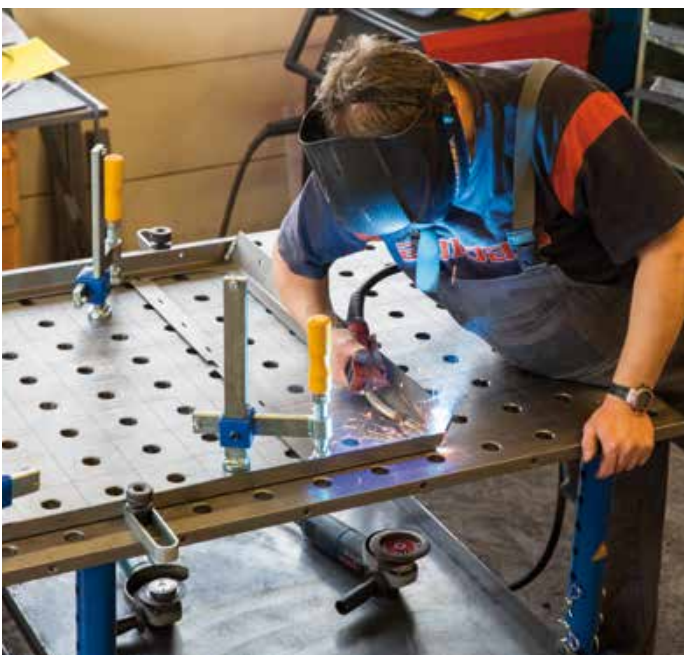
[www.hans-greub.ch](http://www.hans-greub.ch)



# FIREPLACE FRONTS

I N T H E F I E L D

## Greub - Fireplace Fronts



Illustrations are showing the production of custom-made glass fronts for fireplaces. The precise surface texture of Siegmund tables combined with their flexible accessories, increase the productivity of piece production by 20-30%.



SOURCE:

BHDT GMBH

HÖNIGSBERG (AT), 2013

siegmond®





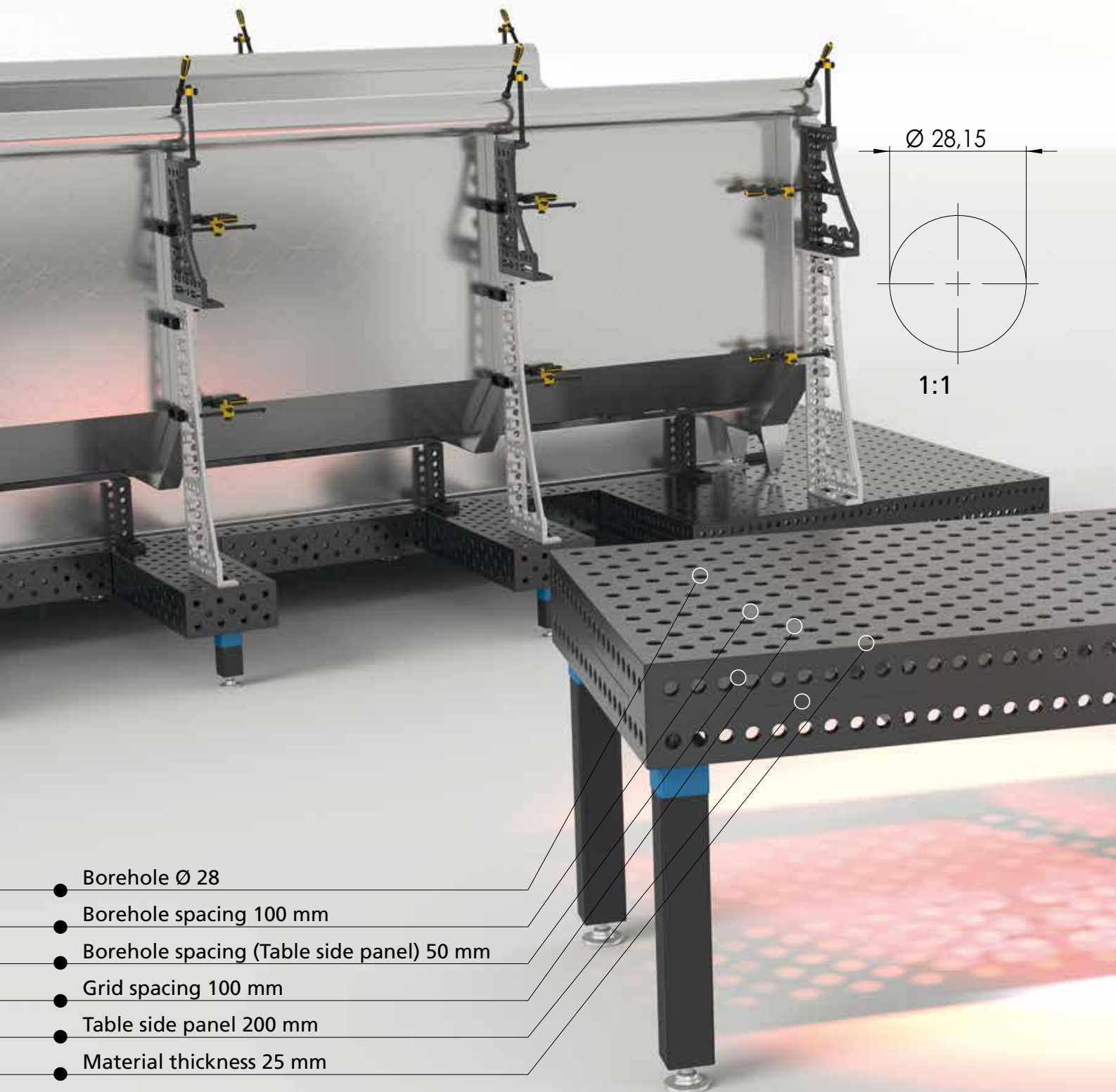
## BHDT - High-Pressure Plants

Siegmund tables facilitate the pre-fabrication of isometric lines. Due to the high precision of the tables, intermediate and final measurements can be constantly performed. This does not only result in a savings potential of direct work e.g. assembly, it also reduces rework.



# 28

MEETS ALL REQUIREMENTS.  
FROM LIGHT TO HEAVY CONSTRUCTIONS





# 16

FOR LIGHT AND  
FILIGREE CONSTRUCTIONS

