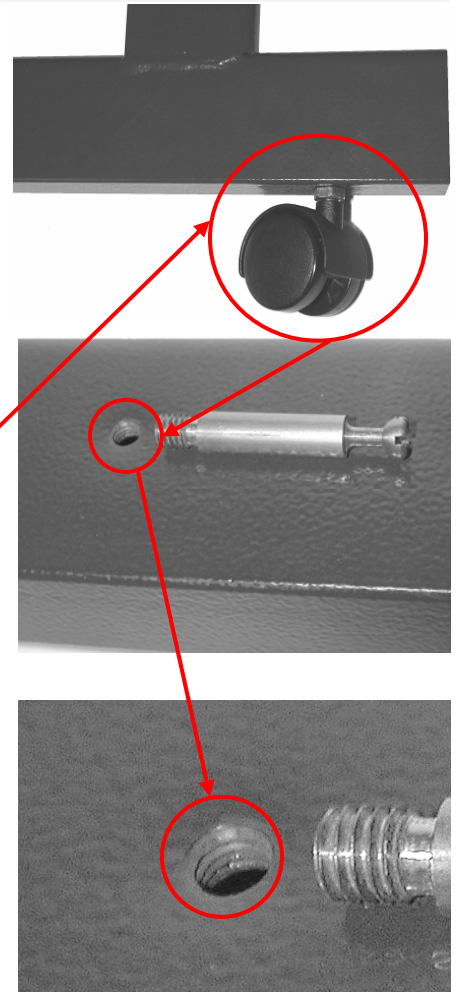


Flowdrill for the connection of the roles



Specifications

Material	Steel
Form	Square Pipe
Size	60x30x2 mm
Thread	M 6
Flowdrill	FD 5,4 Short Flat

Exception

- ▶ Solvable and high-qualitative connection
- ▶ Lowering of the system costs
- ▶ Flowdrill technology substitutes the original procedure (riveted nut)

Flowdrill for the connection of the set screw



Specifications

Material	Stainless steel	<ul style="list-style-type: none"> ▶ Extremely loadable thread by Flowdrill technology ▶ Exact tapped holes in square pipe ▶ Solvable and high-qualitative jointing ▶ Metal is not removed but is formed
Form	Aquare Pipe	
Size	60 x 30 x 2,5 mm	
Thread	M 8	
Flowdrill	FD 7,3 Short Flat	

Exception

Flowdrill with thread for the connection of the valve



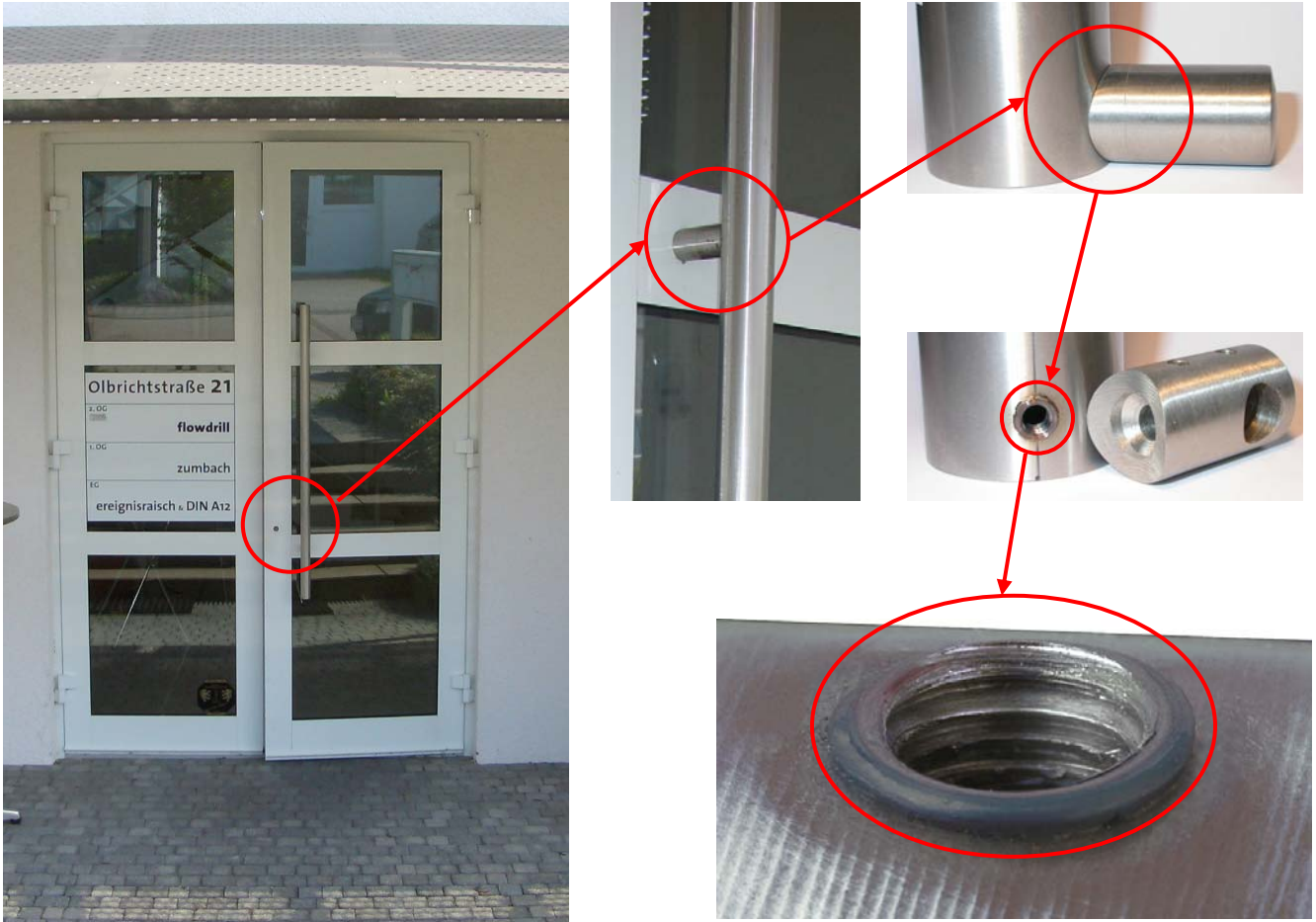
Specifications

Material	Steel
Form	Round pipe
Size	15x15x3 mm
Thread	G3/8"
Flowdrill	FD 15,9 Short

Exception

- ▶ **Pressure-Testing up to 190 bar**
- ▶ **Level-sealing connection by means of Flowdrill collars**

Flowdrill with thread to connect the handhold



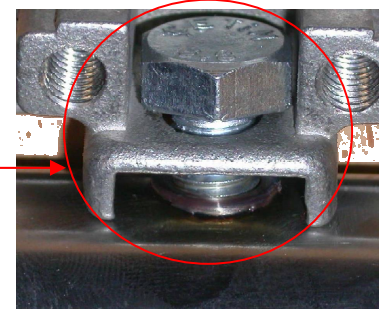
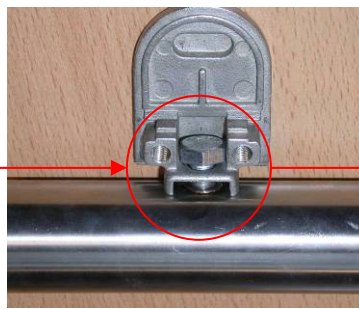
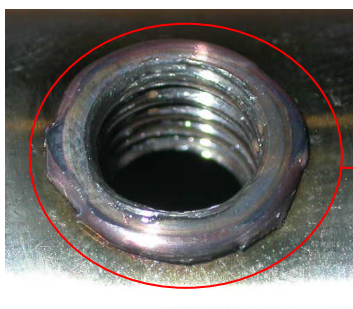
Specifications

Material	Stainless Steel
Form	Round pipe
Size	50x2 mm
Thread	M 8
Flowdrill	FD 7,3 Short

Exceptions

- ▶ Solvable and high-qualitative connection
- ▶ Lowering of the system costs
- ▶ More stability of the connection by Flowdrill technology

Flowdrill with thread for connecting the glass tube



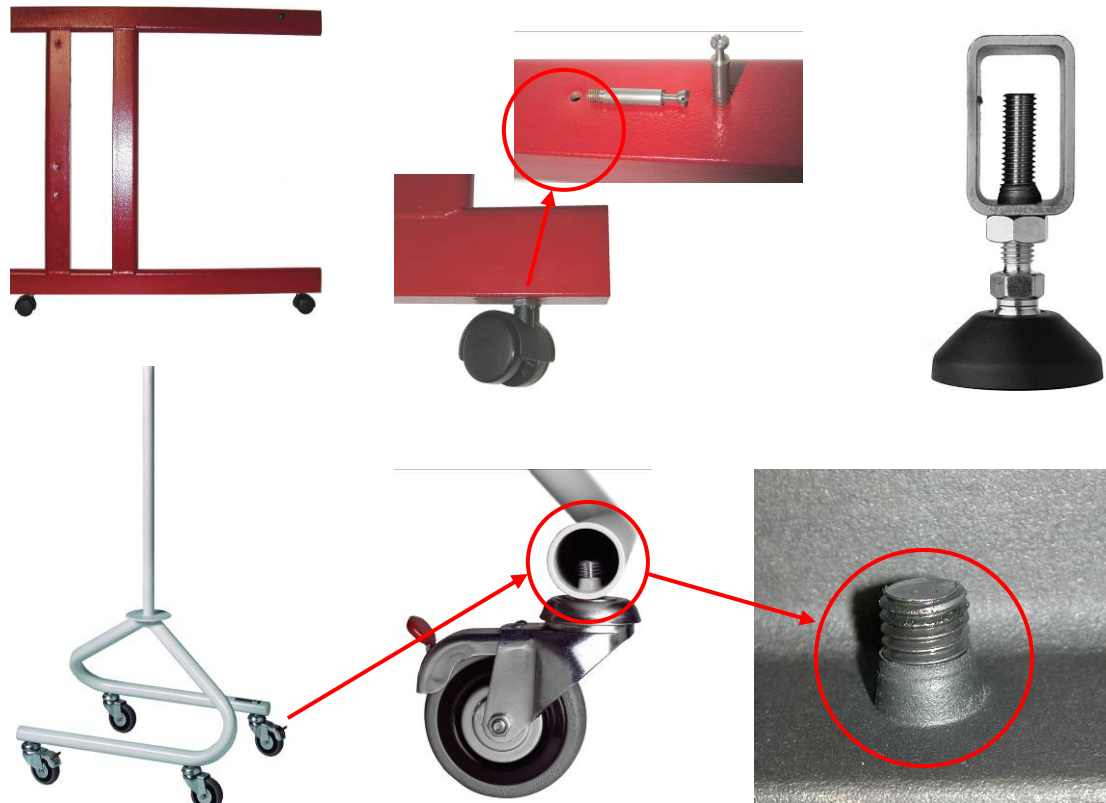
Specifications

Material	Stainless steel
Form	Round pipe
Size	Ø 33,0 mm
Thread	M 8
Flowdrill	FD 7,4 Short

Exceptions

- ▶ **Formfitting threads**
- ▶ **Detachable and high quality connection**
- ▶ **More stability of the application via Flowdrill technology**

Flowdrill for connecting wheels on furitures



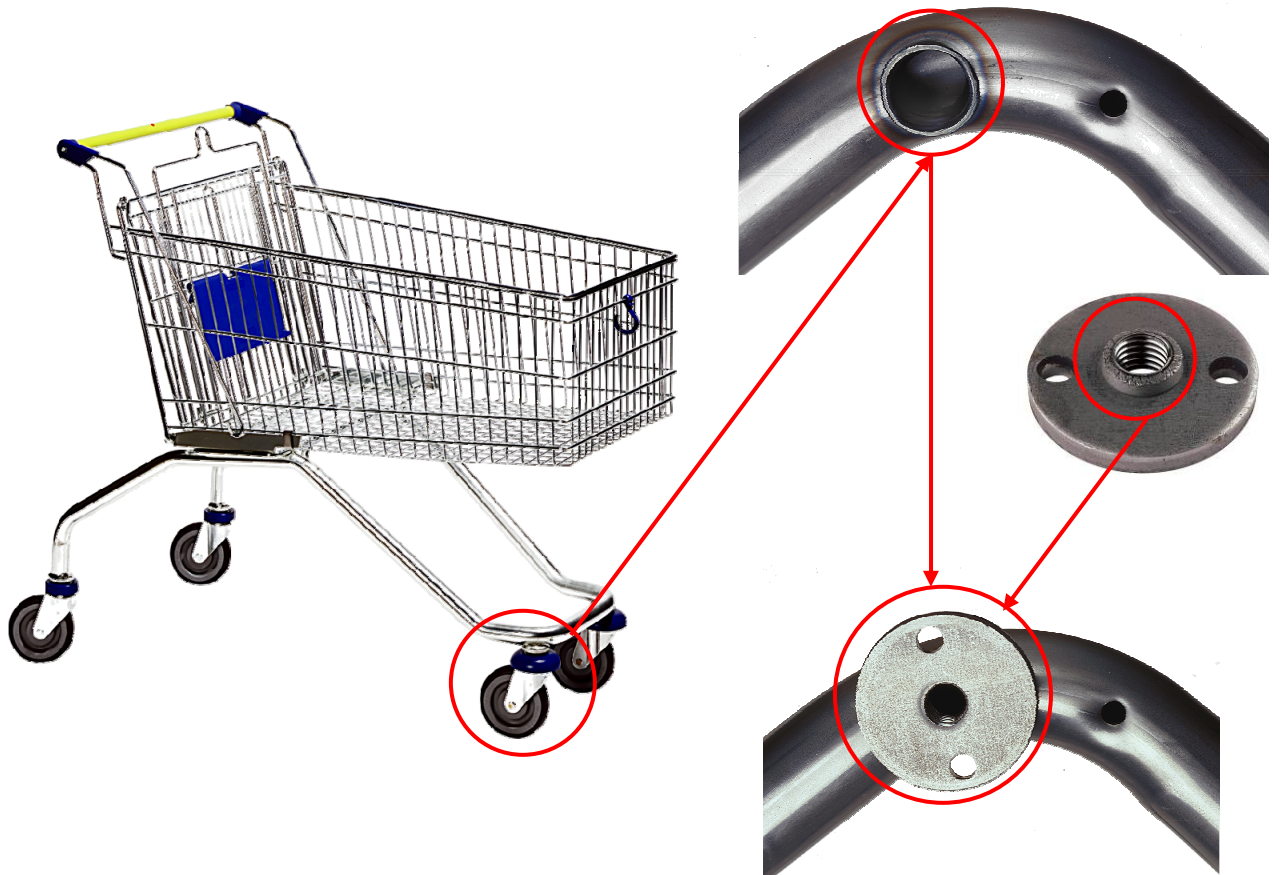
Specifications

Material	Steel
Form	Square- & round pipes
Size	Different sizes
Thread	Different sizes
Flowdrill	Different sizes

Exception

- ▶ Solvable and high-qualitative connection
- ▶ Lowering of the system costs
- ▶ Flowdrill technology substitutes the original procedure (riveted nut)

Flowdrill with thread for mounting the wheels



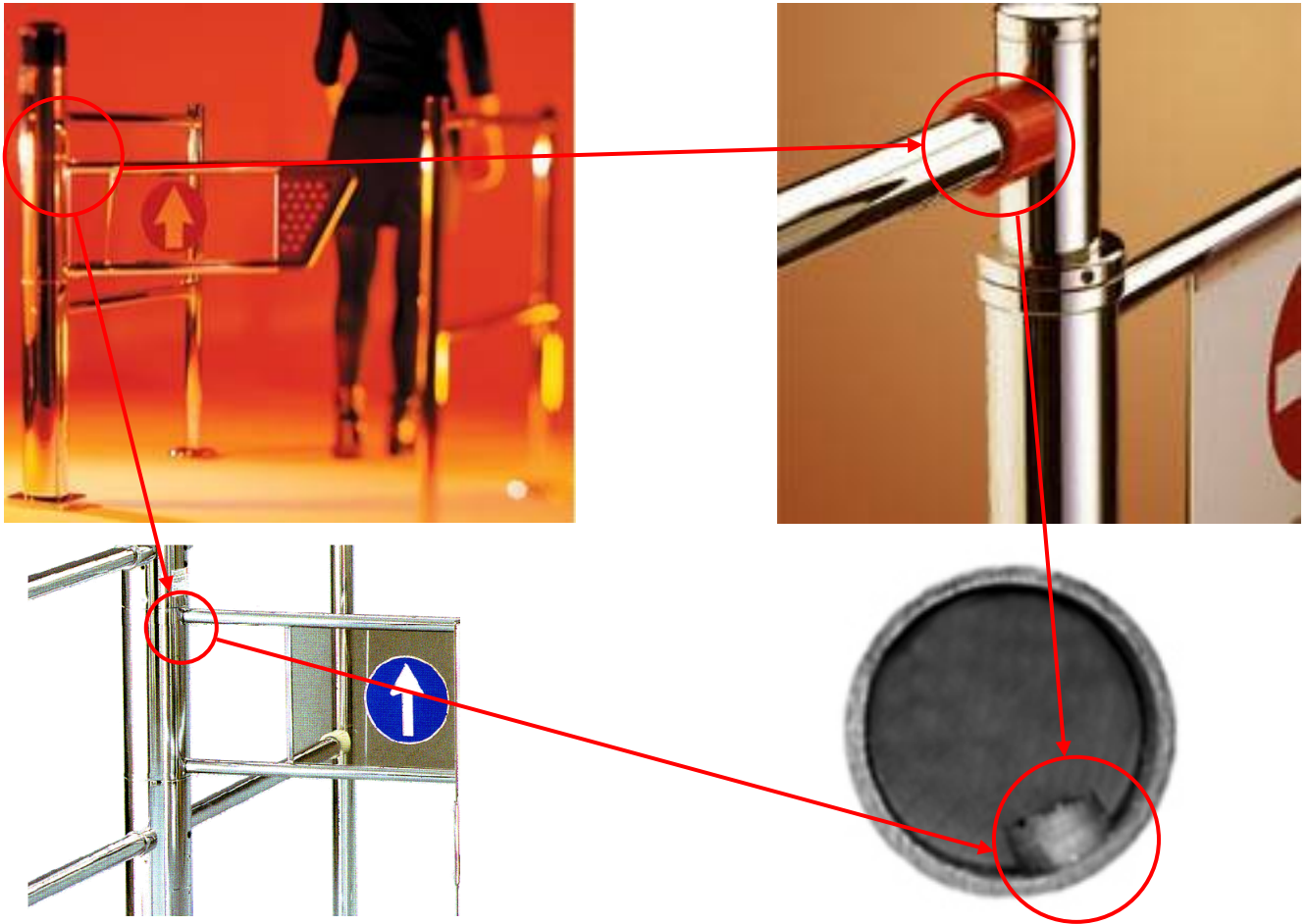
Specifications

Material	Steel
Form	Round pipe
Size	40 x 2 mm
Thread	M 8
Flowdrill	FD 7,3 Long Flat

Exception

- ▶ **Cost effective connection for heavy use**
- ▶ **Quick change of damaged roles by strong thread connection**
- ▶ **Lowering of the system costs**

Flowdrill hole to fix the barriers



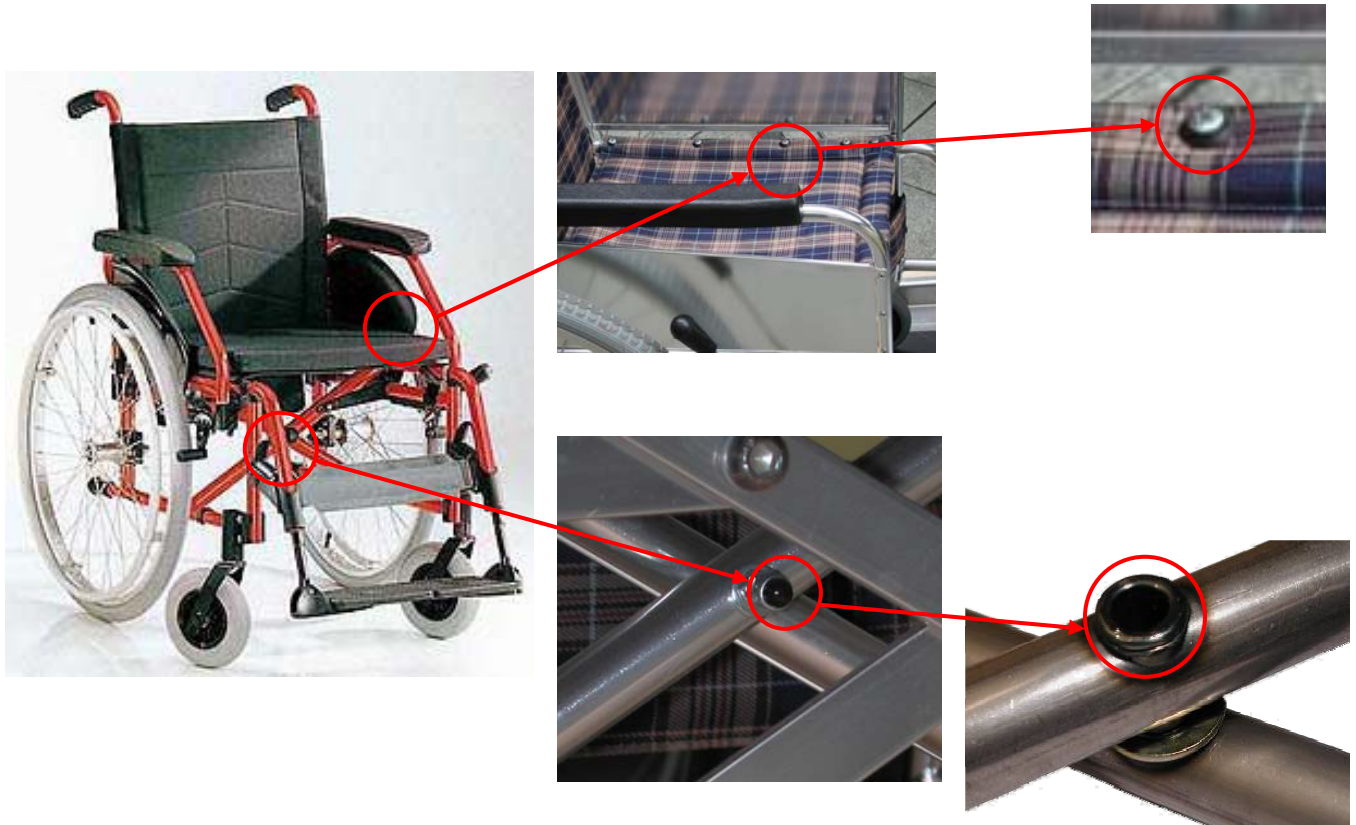
Specifications

Material	Stainless steel
Form	Round pipe
Size	50 x 2,0 mm
Thread	-
Flowdrill	FD 20,1 Long

Exception

- ▶ **Flowdrill hole is used as bearing sleeve**
- ▶ **High stability because of higher bearing surface**

Flowdrill for bolted connection and feed through



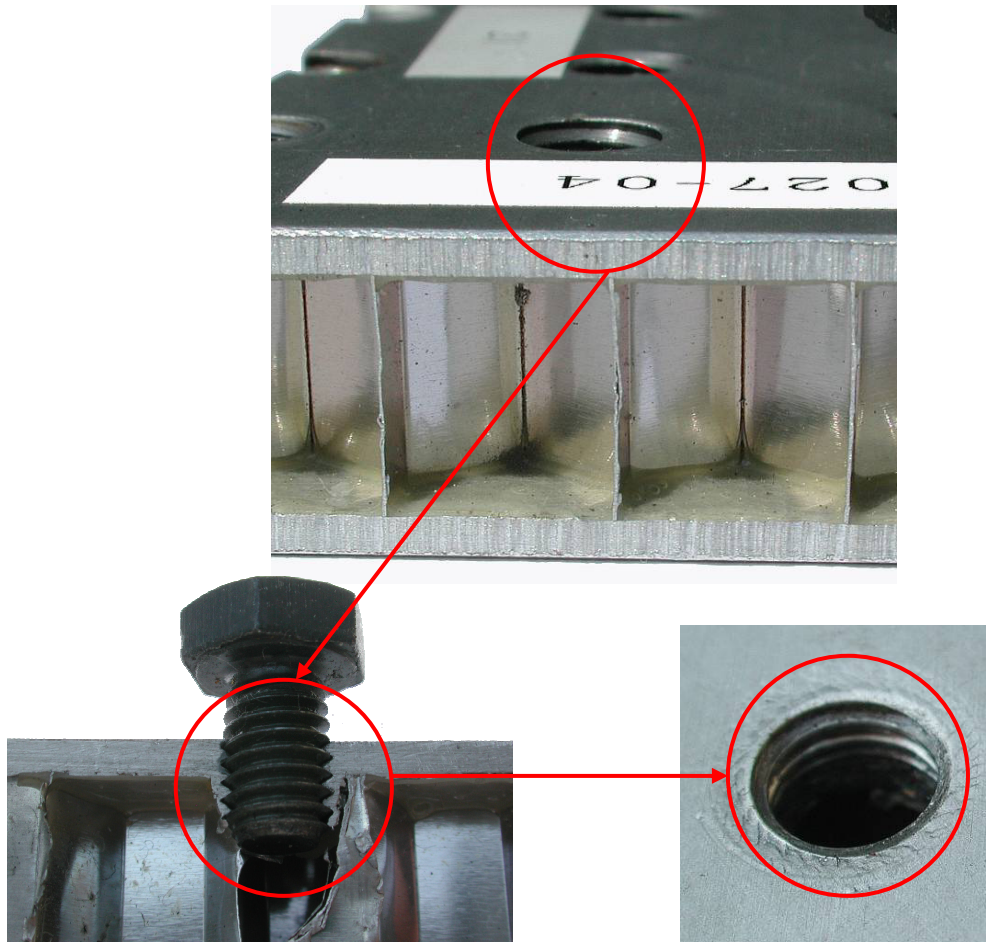
Specification

Material	Steel
Form	Round & Square pipe
Size	Different
Thread	Different
Flowdrill	4.5 – 10.2mm

Exception

- ▶ Flowdrill of two sides as a feed through
- ▶ Use of the Flowdrill for a bearing sleeve for the folding mechanism
- ▶ High resilience
- ▶ Flowdrill for the connection of the seat relations

Flowdrill with thread in aluminium honeycomb core



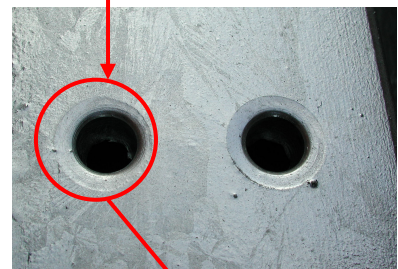
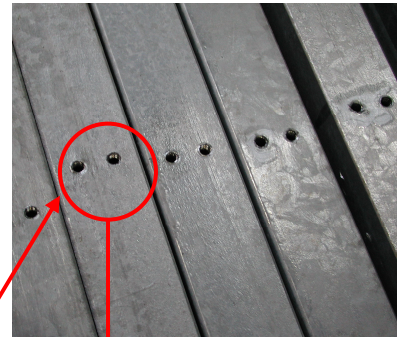
Specifications

Material	Aluminium
Form	Wabenprofil
Shape	2 mm thickness
Thread	z.B. M10
Flowdrill	z.B. 9,2 Kurz Flach

Exception

- ▶ **High axial forces in thin material**
- ▶ **Flowdrill allows new ways of connection**
- ▶ **Special Flowdrill types available**

Flowdrill to connect the rails



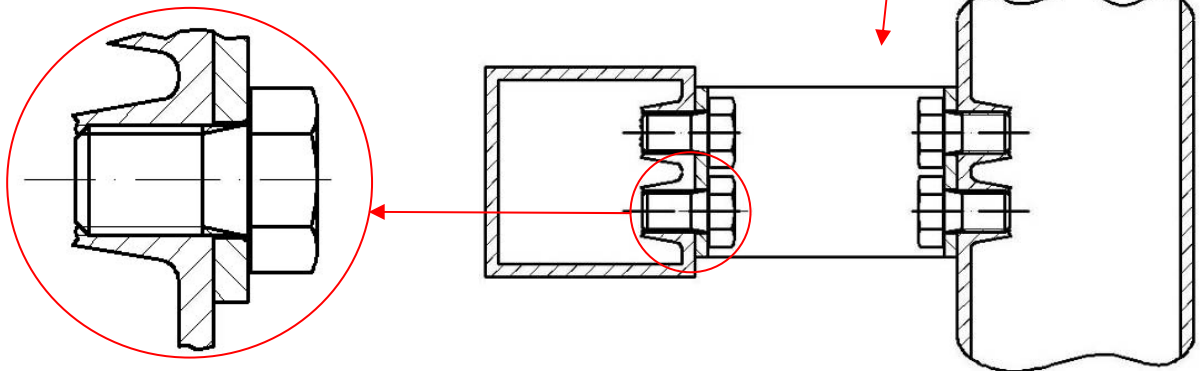
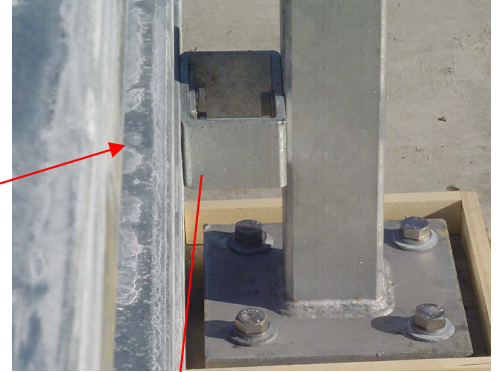
Specifications

Material	Steel
Form	Square pipe
Size	100 x 100 x 2,0 mm
Thread	M 10
Flowdrill	FD 9,2 Short Flat

Exceptions

- ▶ High pullout strength and more stability guarantee more security
- ▶ Thread is taped after galvanizing
- ▶ Precision thread forming in a square or rectangular box
- ▶ Adjustable by bolted connection

Flowdrill with thread to connect parapets



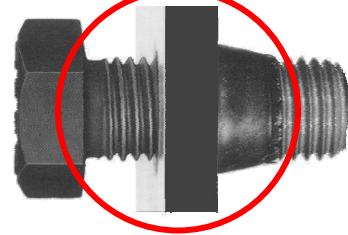
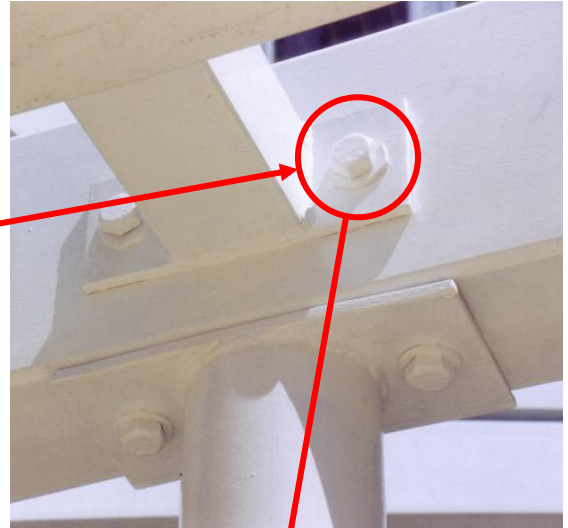
Specifications

Material	Standard Steel
Form	Square tube
Size	100 x 100 x 6 mm
Thread	M 20
Flowdrill	FD 18,7 short flat

Exception

- ▶ **Flexible installation – Fully bolted systems**
- ▶ **Dynamically impact tested**
- ▶ **Single side bolted**
- ▶ **Adjustment is achieved by using a bolted connection**

Flowdrill with thread to connect the components



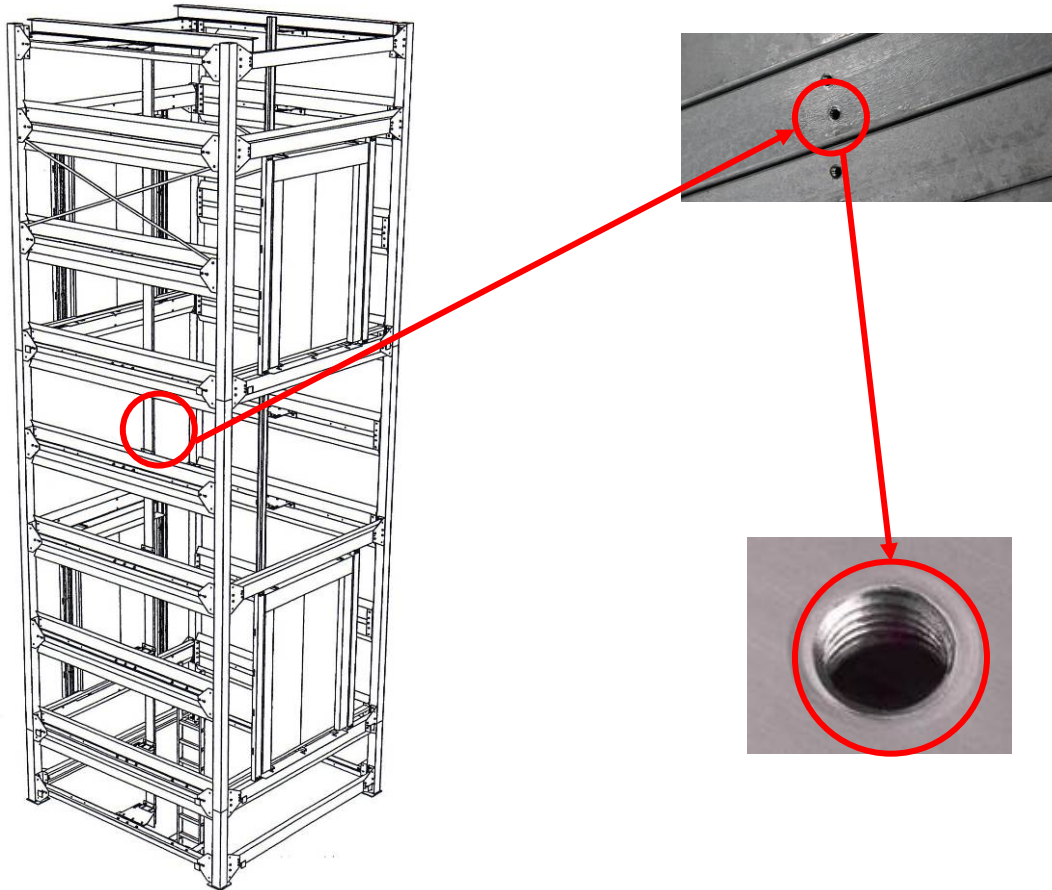
Specifications

Material	Standard Steel
Form	Square Tube
Size	3 mm thickness
Thread	M12
Flowdrill	FD 10,9 Long/Flat

Exception

- ▶ Replaces welding connection
- ▶ Extremely cost effective
- ▶ Safe connection
- ▶ Easy to adjust
- ▶ Higher flexibility

Flowdrill with thread to install the covering



Specifications

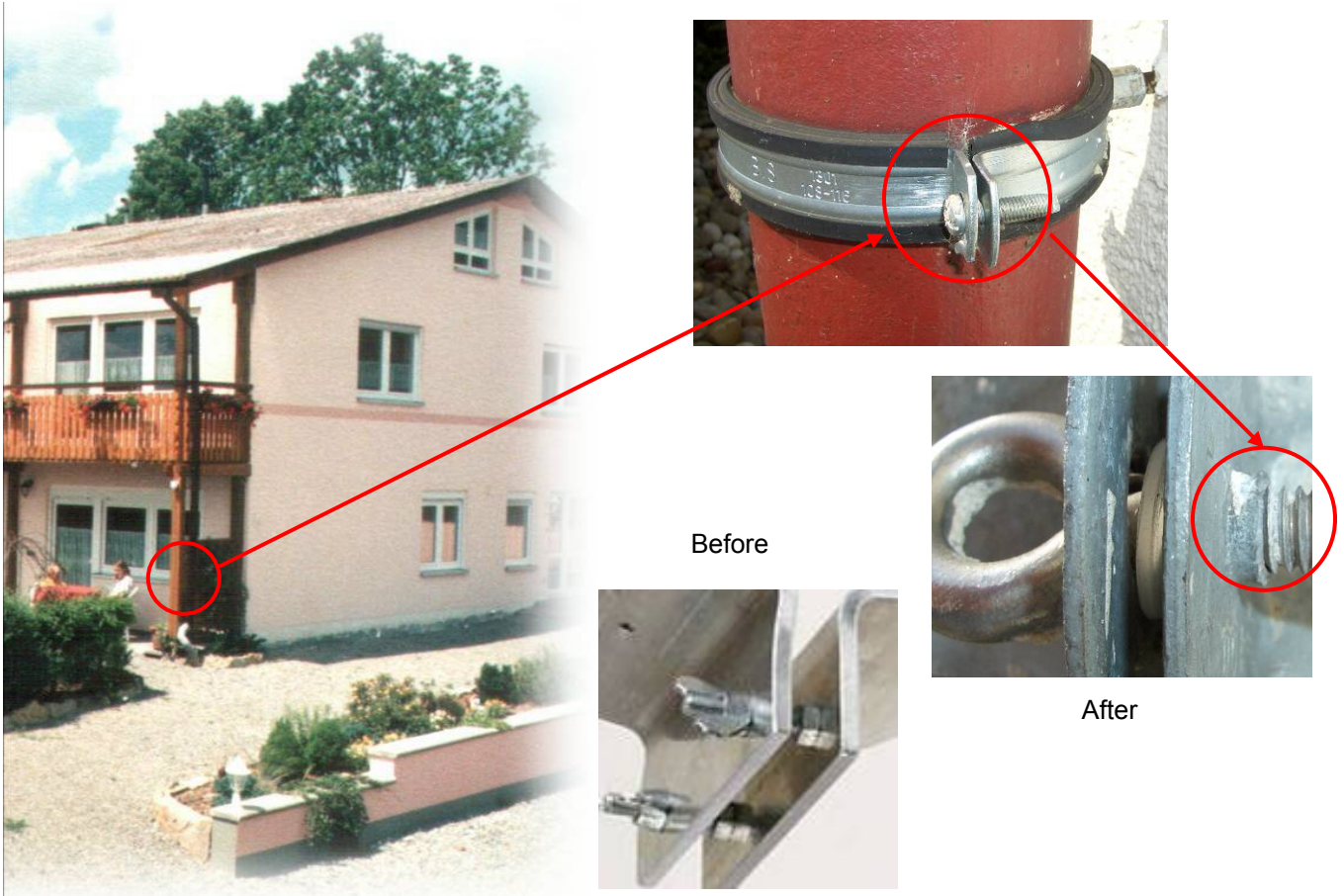
Material	Standard Steel
Form	Square Tube
Size	4 mm thickness
Thread	M12
Flowdrill	FD 10,9 Long/Flat

Exception

- ▶ Replaced the riveted nut
- ▶ Extremely cost effective
- ▶ Higher Productivity

Pipe clamp

Flowdrill for mounting the down pipe



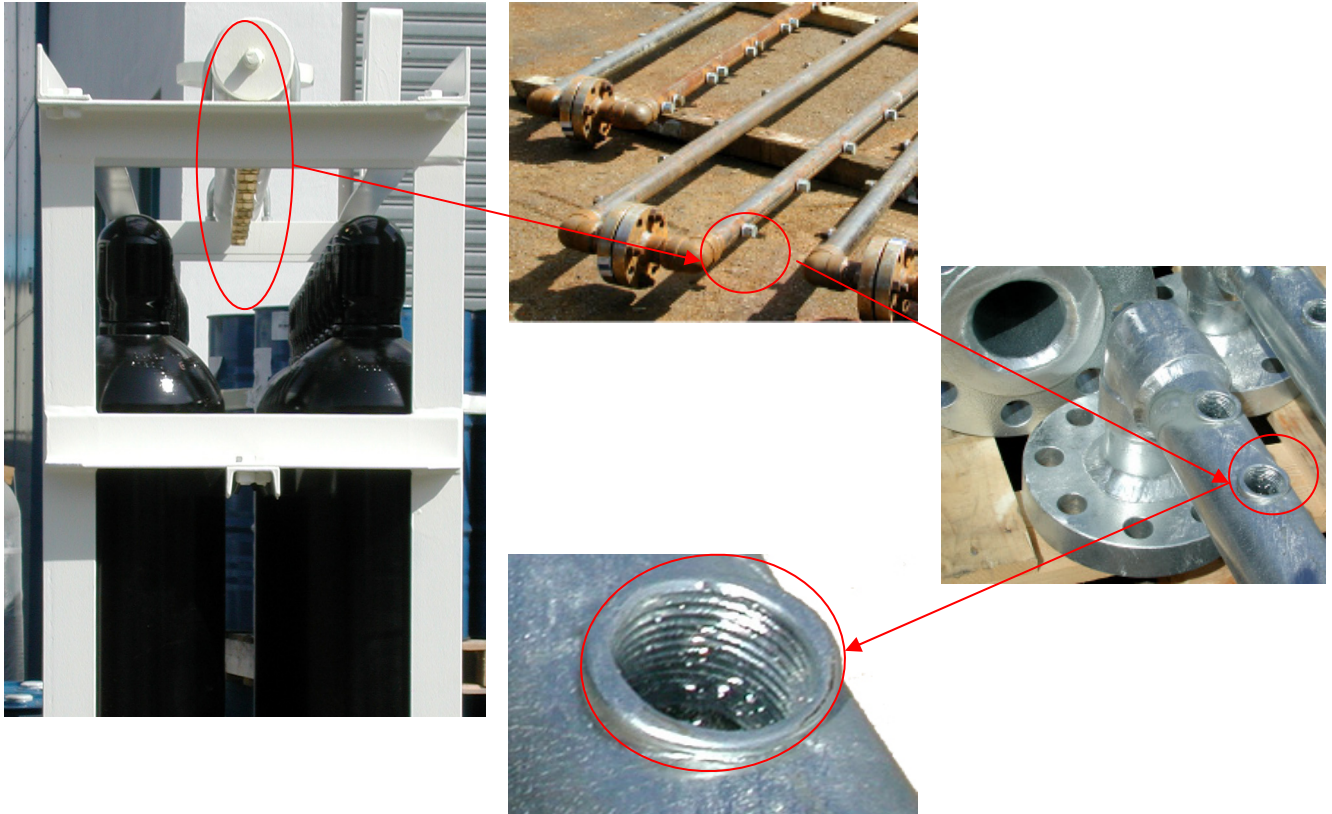
Specification

Material	Steel
Form	Sheet Metal
Size	20 x 100 x 2 mm
Thread	M 6
Flowdrill	FD 5,4 Short Flat

Exception

- ▶ **Achievement in serial production**
- ▶ **Flowdrill technology replaced the traditional method of an hex-nut**
- ▶ **An easy mounting by less small parts**

Flowdrill for connecting CO2 bottles



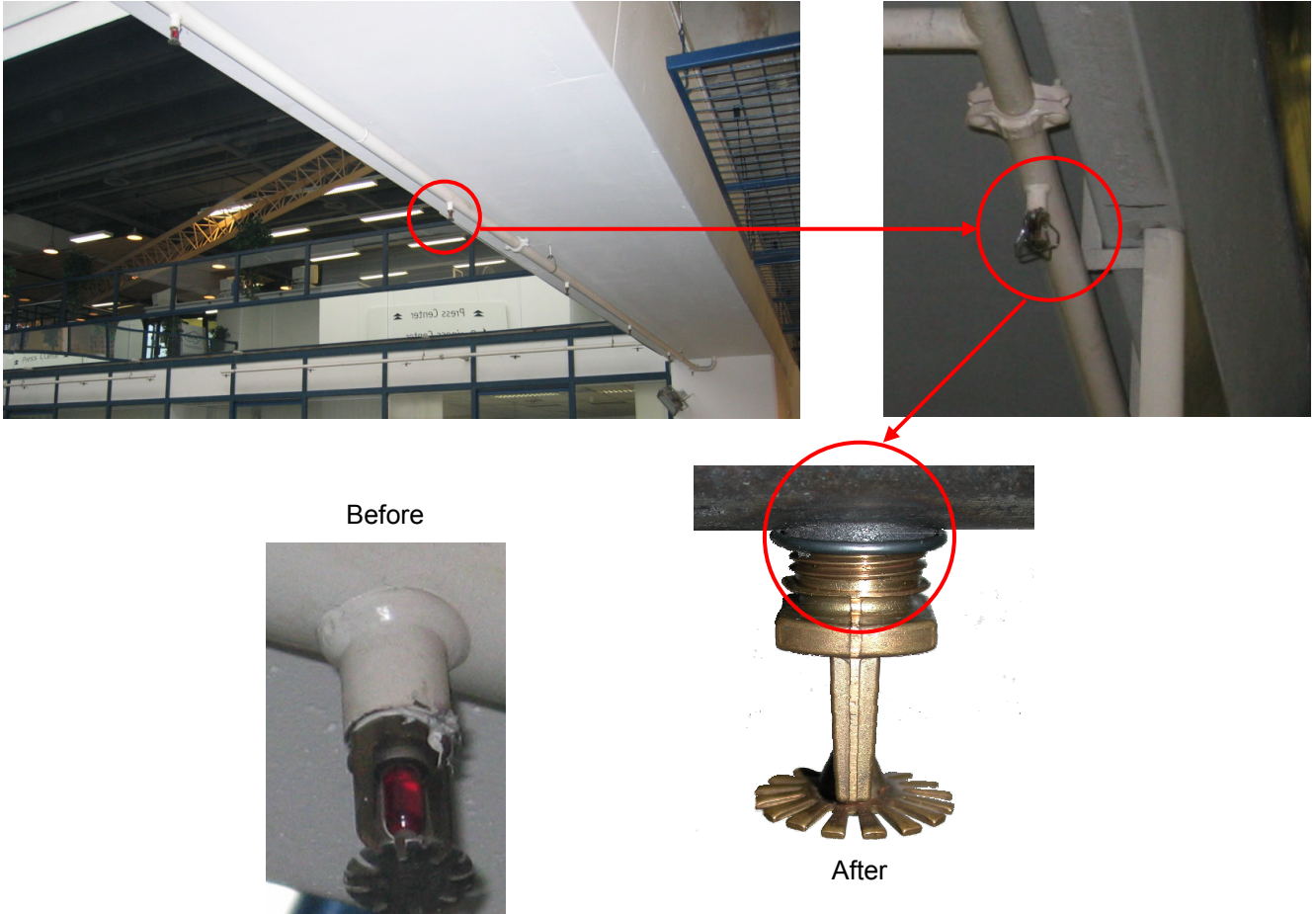
Specifications

Material	Steel
Form	Round Pipe
Size	~9,0 mm Thickness
Thread	BSP ¾"
Flowdrill	FD 25,4 Long

Exception

- ▶ **Pressure-Testing up to 190 bar**
- ▶ **Level-sealing connection by means of Flowdrill collars**

Flowdrill with thread for twisting the nozzles



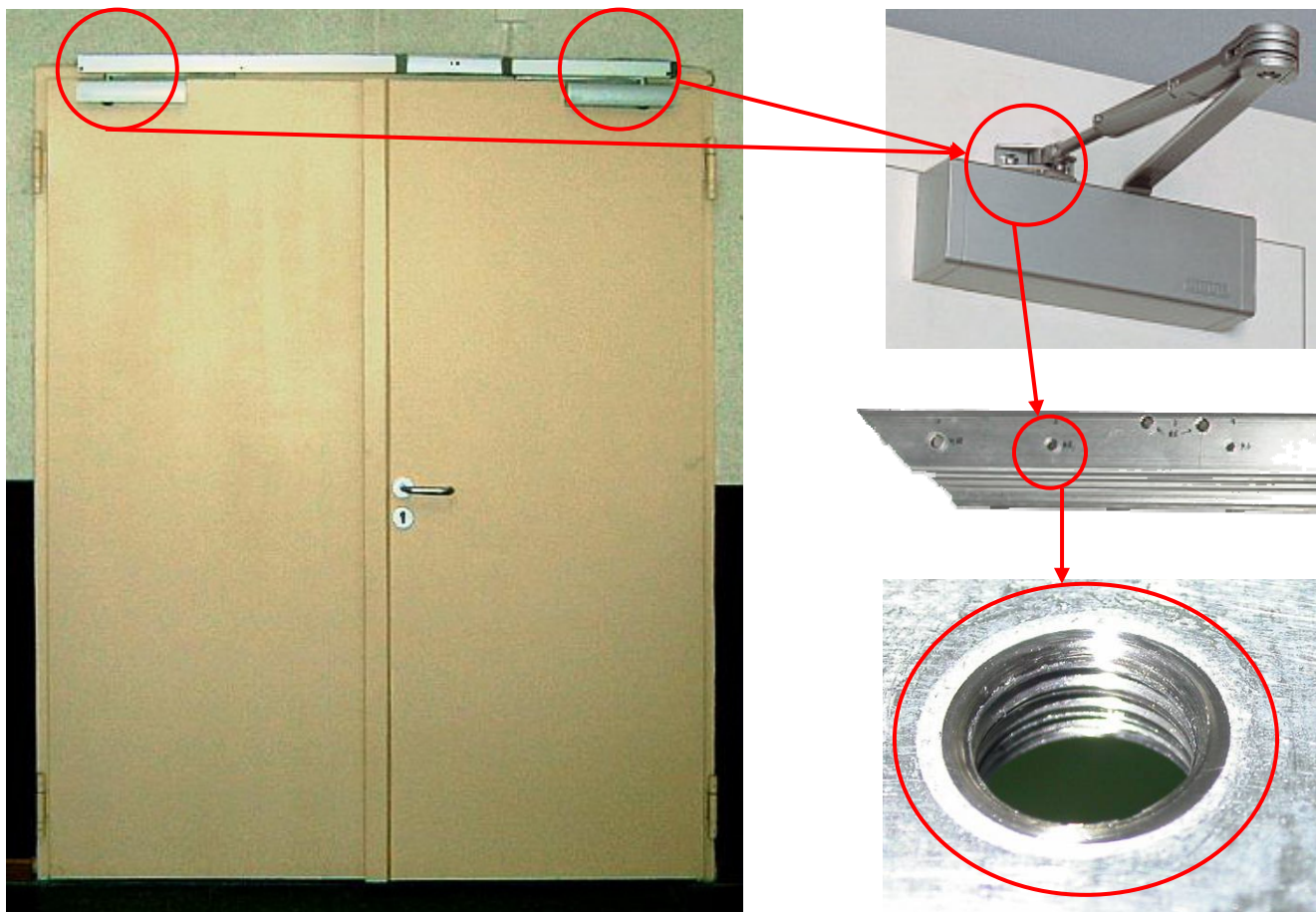
Specification

Material	Steel
Form	Square Pipe
Size	Ø 100 x 2 mm
Thread	G1/4"
Flowdrill	FD 12,4 Long

Exception

- ▶ Flowdrill technology replaced the traditional method of welded nipple
- ▶ Waterproofed connection by Flowdrill collars
- ▶ Lowering the system costs

Flowdrill for the connection of the door closer



Specifications

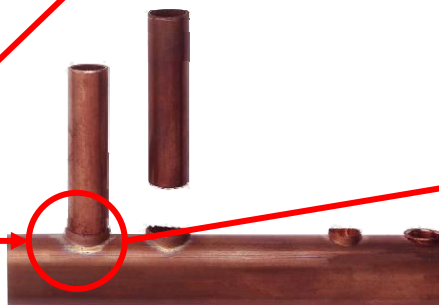
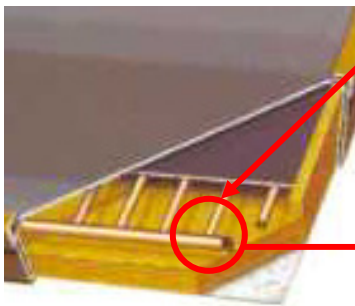
Material	Steel
Form	Profile sheet
Size	1570x75x2 mm
Thread	M 6 – M10
Flowdrill	FD 5,4 Short Flat FD 7,3 Short Flat FD 9,2 Short Flat

- ▶ **Precise tapped holes in square pipe**
- ▶ **Lowering of the system costs**

Brazed Connection

Flowdrill as a socket for brazed connections

Flowdrill®
Research & Development



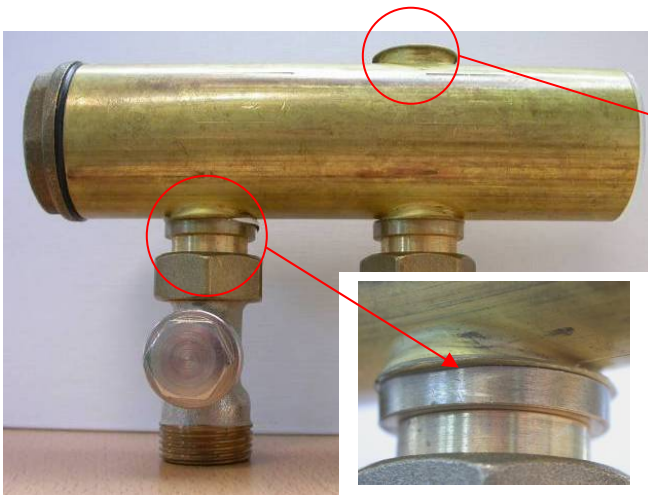
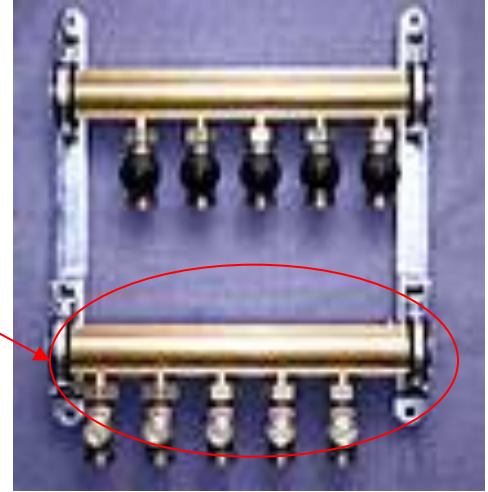
Spezifikationen

Material	Copper
Form	Tube
Size	1-2 mm
Thread	
Flowdrill	FD 8,2 short

Exeption

- ▶ Unpressed upflowing material extends total bush length
- ▶ Accurate adjustment of the pipe to plug in
- ▶ Constant soldered crack for high quality brazed connections
- ▶ Long or short Flowdrill types for cylindrical or conical bushes

Flowdrill hole with thread for connection nozzles



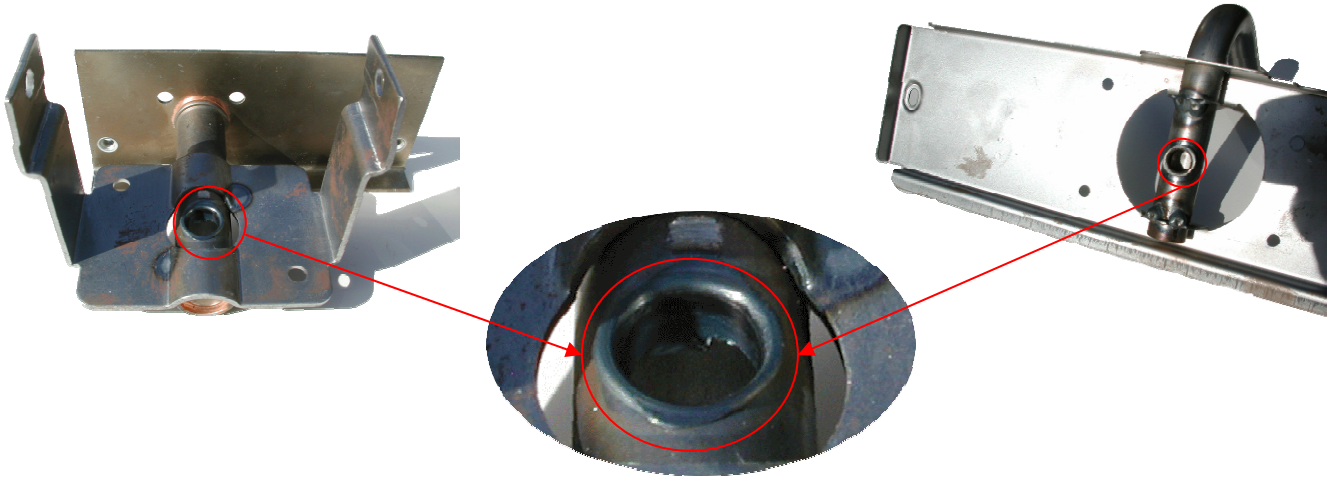
Spezifikationen

Material	Brass
Shape	Round pipe
Size	45,0 x 2,5 mm
Thread	BSP 3/8"
Flowdrill	FD 15.9 Short / Special

Exception

- ▶ Sealing surface for O-ring within the Flowdrill collar
- ▶ Application in different materials
- ▶ Lowering of the system costs

Flowdrill with thread for the connecting nozzle



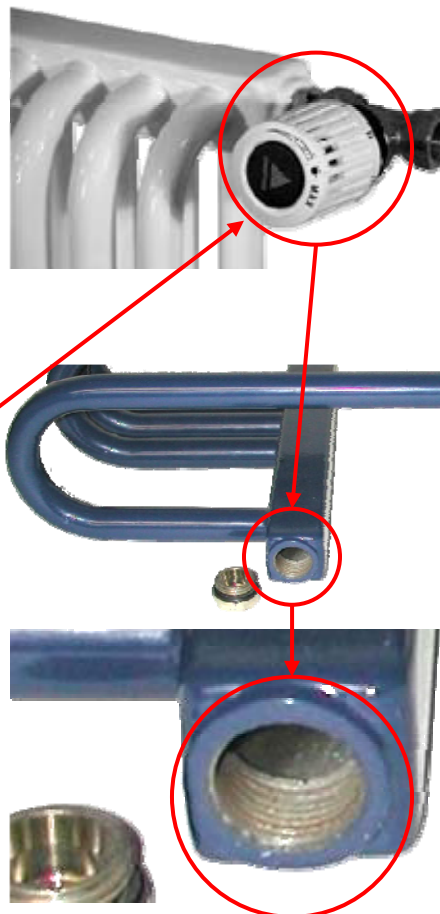
Specifications

Material	Steel
Form	Round pipe
Size	12 x 1,5 mm
Thread	G 1/8"
Flowdrill	FD 9,2 Short

Exceptions

- ▶ Gas proofed connection (flat sealing) by Flowdrill collar
- ▶ Lowering the systemcosts

Flowdrill to the mounting of the heater valve



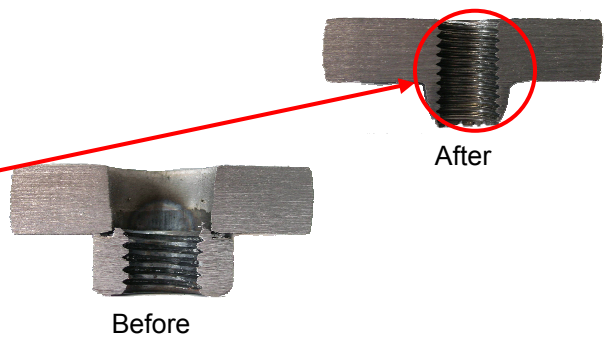
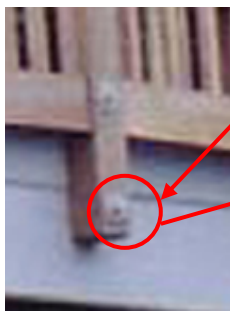
Specifications

Material	Standard Steel
Form	Square Pipe
Size	30x30x4 mm
Thread	G 3/8"
Flowdrill	FD 15,9 Long

Exception

- ▶ **Thick surface for O ring in the collar area**
- ▶ **Lowering of the system costs**

Flowdrill & Thread Forming for Hand Rail Structures



Specifications

Material	Steel
Form	Box Section
Size	60mm x 6 mm
Thread	M 20 x 2,5
Flowdrill	FD 18,7 Long Flat

Exception

- ▶ Flowdrill technology replaced the traditional method of an insert
- ▶ Precision thread forming in a square or rectangular box section
- ▶ The parent material is displaced to form a bush

Flowdrill for mounting the covering

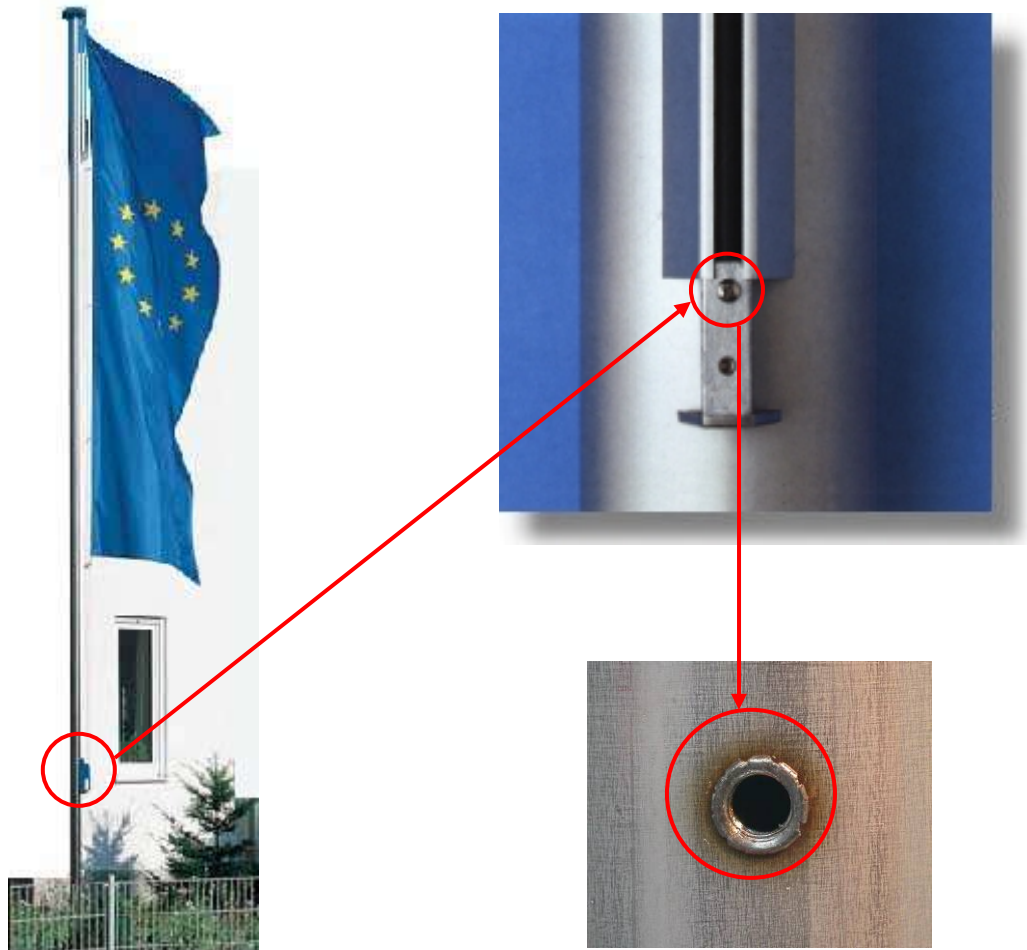


Specification

Material	Aluminium
Form	Round pipe
Size	32,0x13,0x3,0 mm
Thread	-
Flowdrill	FD 18,0 – 9,0 Long Special
Exception	Differential Flowdrill

- ▶ Insertion of the lowering by Flowdrill technology
- ▶ Application for over 20 years proved
- ▶ Lowering of the system costs
- ▶ Application in the serial production
- ▶ Solvable and high-qualitative connection

Flowdrill with thread to fix the lifting



Specifications

Material	Stainless or Aluminium
Form	Round pipe
Size	100x2,0
Thread	M 8
Flowdrill	FD 7,3 Short

Exceptions

- ▶ **Flowdrill technology replaced the traditional method of an insert**
- ▶ **Precision thread forming in a round pipe**
- ▶ **Extremely cost effective**