

# 95030, 95040, 95050, 95060 SERIES

## Straight Line Action Clamps | Product Overview

### Features:

- Low profile with high holding capacities
- Cast steel base and handle
- Allow handle to rotate and fall below mounting plane to lock in retracted position

### Applications:

- Assembly
- Testing
- Tensioning devices

### Also Available:

See page MC-ACC-1 for accessories

95030

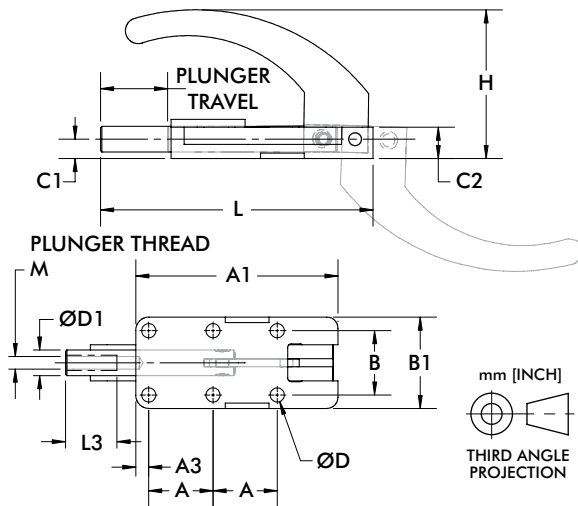
95040

95050 ⓘ

95060 ⓘ



## Technical Information | Holding Capacities



Model	Max. Holding Capacity	Weight	Plunger Travel	(M) Plunger Thread	Recommended Spindle (Not Supplied)
95030	[550 lbf] 2450 N	[0.80lb] 2,58kg	[0.98] 24,9	M6	205203-M
95040	[1100 lbf] 4900 N	[1.60lb] 0,73kg	[1.50] 38,1	M8	207203-M
95050 ⓘ	[1650 lbf] 7340 N	[2.10lb] 0,95kg	[1.97] 50	M12X	220203-M
95060 ⓘ	[3960 lbf] 17600 N	[6.4lb] 2,9kg	[2.36] 60		

ⓘ This item is available upon request

HC = Holding Capacity, EF = Exerting Force, AF = Applied Force

Part No.	A	A1	A3	B	B1	C1	C2	ØD	ØD1	H	L	L3
95030	[0.98] 25	[3.09] 78,6	[0.20] 5	[0.98] 25	[1.40] 35,5	[0.30] 7,5	[0.48] 12,2	[0.22] 5,5	[0.39] 10	[2.28] 57,8	[4.17] 106	[0.79] 20
95040	[1.38] 35	[4.35] 110,6	[0.34] 8,6	[1.38] 35	[2.00] 50,7	[0.39] 10	[0.72] 18,3	[0.26] 6,5	[0.55] 14	[2.82] 71,7	[5.86] 148,9	[0.98] 25
95050 ⓘ	[1.77] 45	[5.54] 170,6	[0.40] 10,1	[1.77] 45	[2.60] 66	[0.55] 14	[0.94] 23,8	[0.33] 8,4	[0.75] 19	[3.21] 81,5	[7.48] 189,9	[1.57] 40
95060 ⓘ	[2.17] 55	[6.73] 170,9	[0.40] 10,1	[2.17] 55	[2.99] 76	[0.63] 16	[1.08] 27,4	[0.41] 10,5	[0.87] 22	[3.55] 90,2	[9.17] 233	[1.57] 40

ⓘ This item is available upon request